



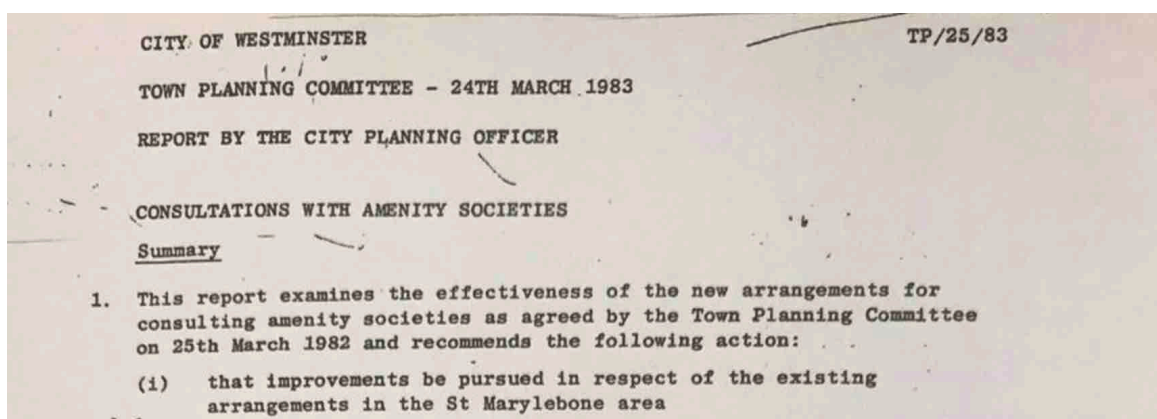
Marylebone Association

Newsletter March 2022

Dear {Contact_First_Name},

Happy Shrove Tuesday, enjoy your pancakes!

The Marylebone Association - The First 40 Years



The Marylebone Association was founded 40 years ago this month in 1982 - and although much has changed in this time, much has not. No committee members have survived from that time but we still have a few of the original members on our books. Our Honorary Secretary, Kevin Coyne, sadly standing down later this year, however has served on the committee since the mid 1990's and has provided an invaluable link with the many different Chairs we have had stretching back over that time.

Prior to 1982, the St Marylebone Society (SMS) dealt with planning applications and other matters for the entire Marylebone area. The SMS had been set up in 1948 to help save the war-damaged Nash Terraces in Regent's Park and covered approximately the area of the old Borough of St Marylebone - which merged into the City of Westminster in 1965. However by the 1980's the Society was experiencing problems with reviewing the ever larger quantities of planning applications.

The Marylebone Association was formed as a result of the new arrangements for consulting with amenity societies that the City of Westminster brought forward in 1982. Westminster Council decided that the area was overlarge and needed to be split into two separate organisations, one south and one to the north of the Marylebone Road.

The Association was created in order to deal with the south of the area, with its original boundary being somewhat wider than the present MA boundary - extending to Marylebone Road, but running further east to Great Titchfield Street.

The new Association was drawn from the nucleus of the George, Blandford, Baker Street Society, which had been formed originally in response to the controversial redevelopment proposals for Kendal Place off Baker Street. In addition there was an amalgam of various smaller associations that co-existed in the area, including the Marylebone Village Residents Association and the Langham Neighbourhood Association. All these associations appear now to have faded away, having been fully absorbed at some stage into the MA.

However, the new arrangements took some time to bed in. In a review a year later, in 1983, by Westminster Council, its conclusion was not particularly encouraging: "The Marylebone Association does not appear to have attracted many members and has taken some time to establish itself into a regular routine of response in the context of the consultation arrangements...however...it is hoped that with guidance from the (Westminster) Officers, the Association will develop its strength and expertise and will be able to fulfil the role and purpose of the consultative process".

Well, from this stuttering beginning matters gradually improved, much fresh talent was recruited, and our membership grew until by the late 90's the Association was looking more like it does today. In the first decade of the 2000's there was a move to re-unite with our sister society across the Marylebone Road, the St Marylebone Society. This fell apart at the final hour for reasons too obscure now to recall. Since then matters have continued in much the same way. The two amenity societies did come to work together in 2013 for the specific purpose of representing residents on the Marylebone Forum, which they still do, although this area of interest excludes much of the area covered by the SMS.

Looking back we feel we can say that the Association has over these years developed a voice which is now listened to and that some things of value that residents wanted have been obtained for Marylebone during this period. Perhaps more importantly, a number of plans for the area that residents definitely didn't want have been stopped. Who knows what the next 40 years will have in store - sadly whatever it is, we very much doubt that most of the present committee will still be around to find out!

The link to the minutes establishing the MA can be found [here](#).

Coffee Morning at Howard De Walden



The MA Coffee Morning on February 16 was very well attended – and it's not hard to see why. The Howard de Walden Estate, the largest landlord in the area, recently spent an eye-watering sum completely refurbishing their Queen Anne Street HQ and invited MA members, some 37 in total, to come and have a look

Street HQ and invited MA members, some 37 in total, to come and have a look.

And what a feast it was. A magnificent choice of tea, coffees, pastries and soft drinks served in the 'hub' on the top floor, a comfy lounge-cum-eating area used by staff for lunch and meetings, with splendid roof-top views and light flooding in.

Mark Kildea, Howard de Walden's Chief Executive, gave an hour out of his busy day to attend the event and talk to members and gave a short address during which he pointed out, albeit good-naturedly, that the refurbishment had cost more than originally anticipated, a situation many of us will be only too familiar with, although perhaps not on quite the same scale!

After coffee, members were invited to take a tour of the building, and what has been achieved is indeed impressive. It was good also to see that the original staircase had been masterfully incorporated into the contemporary design together with the unchanged Board Room, a nice touch in recognition of the history of the building and the Howard de Walden family.

Several members, now retired, agreed that they very much wished they had been able to enjoy such a wonderful environment during their own working lives.

Westminster News

Marble Arch Mound - Loveless, say Architects



MVRDV, the architects of the £6m plus Marble Arch Mound have finally broken their silence on the Mound saga. In an article on their website, the Dutch architects say they, "wish to provide our account of the events, while also critically examining our role in this and publicly acknowledging our mistakes."

Their account only goes to heap more blame on Westminster Council, so why did they keep quiet about this for so long? Apparently on the request of Westminster Council themselves.

The Architects are scathing about the implementation of the project finding multiple errors, such as failing to properly water and irrigate the installation and inadequate planting.

Perhaps unsurprisingly, they put the blame for failure firmly at the door of Westminster Council rather than on any actual failures in the design: “when we were finally able to travel and see the project for ourselves, the deception was obvious: there had been virtually no maintenance, making the waste of money complete. What should have been a celebration of London became a loveless installation that, with a few nice green plants here and there, provides a glimpse of what might have been. In our thirty years of practice, MVRDV has never before experienced such nonchalance and laxity with our design work.”

On costs, the architects said that “The cost of the whole project would be £1.25 million, of which 0.8 percent, £10,000, was set aside for the design.” As we now know, “The Marble Arch Mound’s costs escalated to £6 million, an inexplicable budget increase of almost £5 million for which we never received an adequate explanation.”

The fault, they claim, lay with Westminster in failing to effectively oversee the contractors they had given the job to, and failing even to communicate adequately with them, the architects allege. And the result: “The overall impression of it was that it had been left to rot in the middle of London's most important shopping district.”

The architects go on to claim that they had warned about a possible premature opening - but they were ignored and as a result the Mound was opened while still unfinished: “Visitors who paid £8 the first weekend were so insulted by the experience that they rightfully complained via social media. Journalists were shocked and voiced their critiques loudly. In short, the Marble Arch Mound went viral, but not in a good way. The nonsensical decision to open the facility prematurely was nothing short of a disaster.”

Obviously they seek to disassociate themselves from the whole venture as much as possible. As the old saying goes: “success has many friends, but failure is an orphan”.

More Pedestrianisation

Another plan with few friends can be found close by Charing Cross station. The residents and local businesses in Villiers Street are rallying to raise objections to Westminster City Council's Traffic Management Order (TMO) proposal to essentially pedestrianise the entire street for 85% of the day, allowing vehicle access from 06:30am-11:00am only.

The plan is to have vehicles load/unload underneath the bridge at Embankment Station and have large and small delivery items (furniture, hotel bed linen, beer barrels, passenger suitcases etc.) dragged up and down the street - which is on an obvious incline/decline.

This proposal will have a huge impact on local businesses and residents receiving deliveries, maintenance visits, moving-in/out etc.

This appears to be another example of the tendency to impose street closure from above without listening to those who will be actually affected by it on a daily basis - sounds familiar enough to us in Marylebone.

WCC are claiming this is being done to prevent terrorist vehicle attacks on pedestrians - although they seem to be comfortable enough exposing the same pedestrians in the morning rush hour.

Details [here](#).

Piazzas Back?

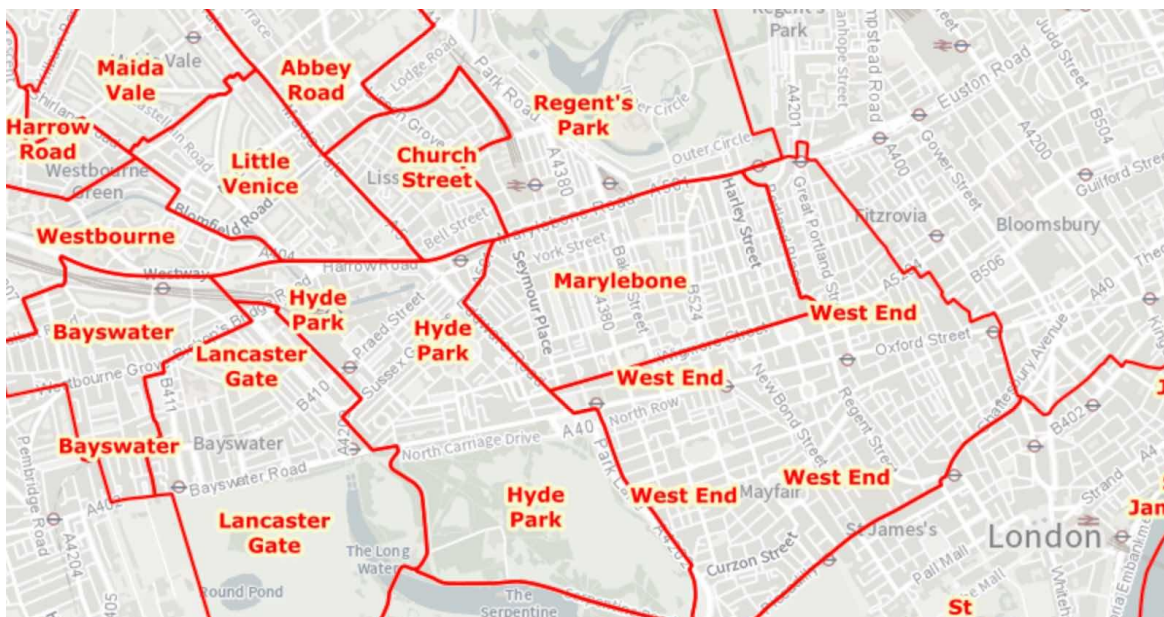
On the continuing subject of deeply unpopular plans, a question we are often asked is - have the Piazzas really gone for good? Readers may recall that these were proposed for Oxford Circus last year, and indeed works to implement them were commenced, without consultation last July. They stopped the following month following the resignation of those leading the Oxford Street District Plan following the Mound debacle.

At the time we were told that the scheme would be back in some form but this time would be accompanied by a prior consultation. In the months following no sign of it has been seen and indeed it is clear none will be this side of the election. But what about after that? We would all prefer to know now rather than later.

The Association has therefore put the following question to the Council Leader: "we would like to know whether there is any intention to reintroduce the Piazza Scheme at Oxford Circus, in any form at all, either now or in the future. Similarly, the previously proposed 2 way traffic scheme along Cavendish Square North and Mortimer Street which was allied with this - on which there has been no consultation- we would like to know if this is still being contemplated- if so when will we be able to see the plans for this? (preferably prior to any decision being made)."

It is a question that becomes increasingly pertinent as the election draws nearer, but alas it is not one to which we have been able to elicit any answer. The Chief Executive, in the absence of the Leader, was asked directly about this at a recent meeting of amenity societies, but the answer was non committal.

West End Ward Council Election Hustings



Some of the plans for the Oxford Street District will, and do, impact the whole of Marylebone, so it is important to know who is standing to represent us in this ward and what their ideas are for the area. With the ward changes the new West End Ward boundaries now cover far more of the Marylebone area, including much of the Oxford Street District.

It is good news therefore that we will now have the chance to hear the candidates standing for election as councillors to the West End Ward and ask any questions about matters affecting our area such as the lane narrowing in Oxford and Regent Street and the future of the Piazzas.

You will have the opportunity to do so at The Hustings for the West End Ward council elections. These will take place on 28 April 2022, from 6pm in St Anne's Church Hall, 55 Dean Street. Members and residents are invited and other voters that live in the West End Ward.

You need to [register for a ticket](#) which is free but you can make a donation if you wish. There will be a live stream and will make these details available closer to the event.

Unfortunately there is yet no similar opportunity to quiz candidates standing for election as councillors to the new Marylebone Ward.

Pedicabs - Good and Bad News



It seems incredible that a Bill can be stopped by a single MP, but that appears to be the case with the Pedicabs Bill. Its tortuous progress has been opposed at every turn by one Sir Christopher Chope. His issue appears to not be with the virtues of this particular bill, but more on the broader aspect of the merit of any legislation generally.

So, Sir Christopher's opposition is apparently sufficient to see off the whole thing and with it the work of many who have striven for many years to get this notorious nuisance removed, or at least regulated in some form or another. It therefore would appear that pedicabs are not alone in needing regulatory change. It is surely wrong that one single MP can wreak havoc like this; surely it would be more sensible to amend the parliamentary rules to require say a minimum of 3 MP's to object to a private member bill for it to fail?

Nickie Aiken has asked PM Boris Johnson a question at PMQs reciting the problems she has experienced and asking if he would help her legislate this and he has promised to give Government time to do it:

"When I was Mayor of London I always yearned to be in a position to put that through Parliament, and now I am. I am very grateful to my hon. Friend and we will ensure we give parliamentary time to make it possible. It will be a boon for cyclists and a boon for taxi drivers, and it is high time we did it." The Prime Minister

You can see the video clip of the exchange [here](#).

Covid Recovery Continues

Central London's magnetic appeal is continuing to reassert itself in Westminster. Major Westminster players including Grosvenor, CBRE and Colliers have all produced reports in February that signal positive news for Central London. Also footfall has hit 79% of pre-pandemic levels, the highest seen since last Autumn, before the Omicron variant emerged.

Collier's report, commissioned by the New West End Company, forecasts that the West End will not only achieve turnover of £8.6bn in the next 12 months, but also that the area will recover to its historic annual turnover of £10bn within the next two years, and supersede pre-pandemic levels by a further £1.4bn by 2025.

CBRE's report outlines the Retail Market Summary from Q4 2021. A key takeaway is that despite the impact of Omicron, the footfall in Q4 was up on Q3. Furthermore, investment volume totalled c£1.3bn, a 54% increase from the 2020 figure.

Grosvenor issued an insights piece on growth of new businesses in Mayfair and Belgravia, with 33 new brands opening their doors in 2021. including Barbara Sturm's UK debut and JKS' new restaurant concept Bibi.

Great Portland Estates (GPE) also announced a record period of leasing in its last financial year, despite interruptions caused by the pandemic. Since April 2021, GPE has signed 460,900 sq ft of new lettings, generating a combined annual rent of £32.5m and surpassing the group's previous high of £31.8m in 2016.

Early Community Engagement

This new move to attempt improved forms of community engagement stems from the government requirement imposed on councils under the National Planning Policy Framework (NPPF).

It is certainly widely recognised that engagement with community groups by big developers and their agents, on large projects particularly, has by and large become a box ticking exercise. Much of the so-called engagement is cursory and comes far too late in the process to allow for any useful input from the groups involved, even if any are in a position, or have the resources, to do so, which is often not the case.

The NPPF is concerned with development and the lack of adequate consultation during that process. It states that: "early engagement has significant potential to improve the efficiency and effectiveness of the planning application system for all parties. Best practice pre-application engagement with the local community is at its heart, enables better coordination between public and private resources and improves outcomes for communities and developers"

One of the big proposed changes is that this community engagement should begin at the very earliest stage of scheme development, whereas at the moment it appears to be carried out only after a scheme has been fully worked up. Westminster Council say: "We expect that initial community engagement will be carried out prior to seeking pre-application advice from officers, especially on larger schemes".

And what does this involve? WCC sum the process up, somewhat elliptically, as providing "the opportunity for the engagement to be multi-phased, enabling an informed 'conversation' with communities rather than notifying them of an already

improved conversation with communities rather than reacting to them or an already defined proposal. It provides communities with a meaningful role in shaping their places and allows developers to benefit from the insight that communities can provide through their unique local knowledge...”

For the avoidance of doubt, the community engagement that is being dealt with here is in the planning context and does not apply to the improved engagement that we and other societies are seeking with regard to infrastructure and highways projects such as the Oxford Street District.

Following this engagement, the developer would then need to submit a Statement of Community Involvement (SCI) setting out the type of community engagement undertaken and the success of these methods, along with details of the views expressed and the changes made by the applicant in response.

According to Cllr Robert Rigby, WCC current Head of Planning at Westminster: “This guidance provides the positive framework required to support developers to take the brave steps necessary towards an earlier, more open, inclusive, transparent and meaningful approach to community engagement and I look forward to seeing the positive outcomes that this approach will bring to future development across Westminster”.

This February saw the launch of this early community engagement guidance, and WCC held an event on it, introduced by Cllr Robert Rigby and with a panel including Cllr Matthew Green, Deirdra Armsby, Simon Birkett of the Knightsbridge Neighbourhood Forum, and Nichola Rochfort, Senior Community Engagement Manager at Grosvenor.

We were told the overall objective of the new guidance will be to gain greater trust and insight from local communities, leading to better schemes with fewer objections. Much greater focus will be put on community engagement in committee reports, and engagement will be expected to take place earlier, more transparently, and including a greater range of stakeholders.

One problem with increasing community involvement that became clear in the subsequent discussion was that the community often has neither the skills or resources to take this on. There were obviously no easy solutions found to this although Westminster promised to look at putting in more funding to enable communities to be better resourced to help tackle this - which would be a start.

West End Project nears Completion





One place WCC should not be looking to take lessons in community engagement from is across in Fitzrovia, where the London Borough of Camden and their long drawn out West End Project, is now in its fourth year

The West End Project is Camden Council's biggest ever infrastructure scheme, a £35m project to "transform" the area around Tottenham Court Road which includes changes to the public realm and the way traffic flows on streets including Gower Street, Bloomsbury Street and part of Shaftesbury Avenue. Engagement with those actually affected has been patchy and the results often ignored.

In a textbook example of how not to engage with the community Camden persistently ignored opposition to various elements of the scheme on the grounds of traffic displacement. Everything went ahead just as planned and as a result the scheme has now directed an increased amount of motor traffic down side streets - as was predicted.

Traffic is now often queuing for long periods to get through with engines running and creating more harmful emissions than before and what one resident has described as "the opposite of a low traffic neighbourhood". There has also been a problem with buses colliding with pedestrians and multiple issues with the new cycle lanes, particularly on Gower street where they were closed down again shortly after opening and remained that way for the next year.

Now those who have been affected by the changes are invited to give their views on the following link.

[Have your say on Camden's West End Project](#). Comment until 4 March 2022.

Short Term Lets

Over the past years many residents have suffered major inconvenience from the short term letting of apartments near them. Over the course of a year, homeowners are allowed to let their property for up to 90 nights in London.

However, an increasing number of landlords have started to bend the rules. A number of properties are being let out over the 90-day limit as landlords look to maximise their income. As a result, the supply of long-term rental properties in our City is being reduced, forcing up the cost of renting.

There have also been issues surrounding the management of many short lets. The hands-off approach of some landlords has led to loud and persistent noise problems, dumped rubbish, anti-social behaviour and even illicit activity being linked to their properties. This has created havoc for many people living near to these properties.

Westminster Council therefore wants central London to be given the same powers as Paris and Amsterdam to stop anti-social behaviour caused by nuisance short-term lets, ahead of an official government consultation. It is calling on the Government to introduce a registration scheme for all short lets to resolve these issues.

Opening of the Elizabeth Line

Opening of the Elizabeth Line



The long awaited opening of the Elizabeth Line is drawing ever closer. It is now hoped to open to passengers sometime between March and June 2022. Paddington to Liverpool Street makes up the central London portion of the Elizabeth Line and is one of three sections.

Nine of Crossrail's 10 Central London stations are completed with Bond Street the only remaining station where work is continuing. The journey between Paddington to Liverpool Street takes 12 minutes.

TfL Price Rise

Fares on Transport for London (TfL) services will rise by 4.8 per cent from 1st March 2022, the Mayor of London has announced.

The details released today show that fares will rise by retail price index inflation plus one per cent, an average of 4.8 per cent, meaning most will increase by either 10p or 20p.

Awkwardly for TfL, although fares rise was set at retail price index plus one per cent (RPI+1%), to leave TfL with a surplus above its increased costs, since last July, the RPI index for inflation has soared, and in December 2021, it had reached 7.5 per cent. So even though fares will rise, they will in fact rise by less than other staple goods.

The fare rises above inflation also only affect TfL specific services. Travelcards and daily/weekly caps – which are set jointly with the Department for Transport and relevant train operating companies will rise only by RPI (3.8 per cent).

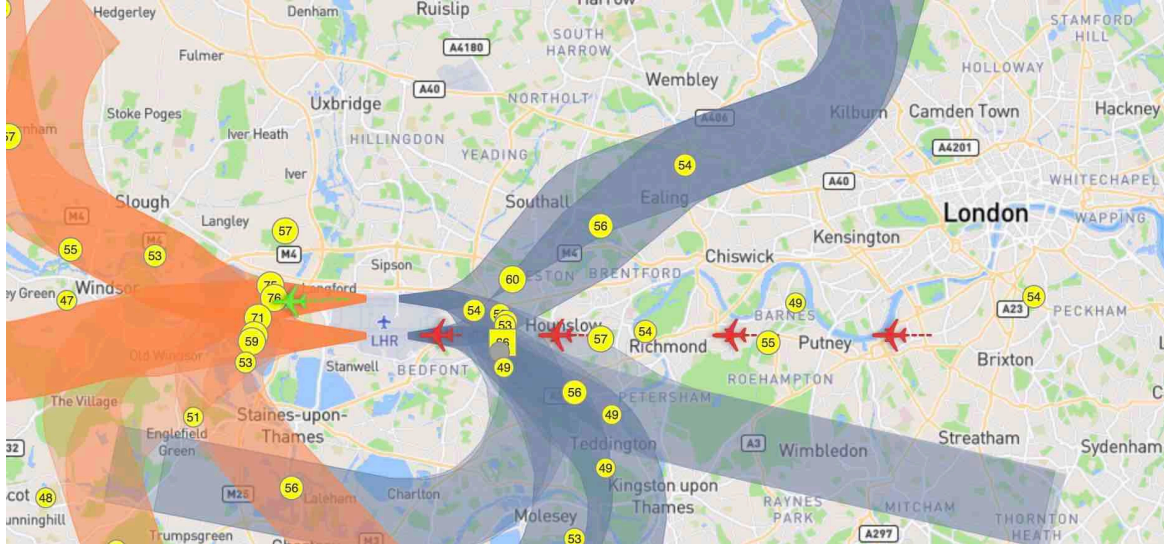
Marylebone Station - First Passenger Journey in Hybrid trains

After months of testing and training of staff, Chiltern Railways began operating passenger journeys using the battery-diesel HybridFlex train the week of 7 February.

Each carriage of the train is powered by a battery which has enough charge to allow the diesel engine to be turned off as the train comes into the station and

when it leaves. The train is quieter and less polluting. Over the next few months, if the piloting of this train is successful, it is hoped that the Chiltern fleet can be modernised and decarbonised.

Heathrow Flight Path over Marylebone?



Heathrow Airport has announced a new proposal to review and update flight paths over London (on approach to landing and after take-off). The review will lead to a new public consultation by Heathrow later this year.

New technology enables more precise location of aircraft and steeper approaches to landing (and so shorter final approaches). Because of the prevailing winds, landing at Heathrow is mostly in the westerly direction. As a consequence of shorter final approaches to landing, new shorter routes between holding stacks and the start of the final approach will be possible.

It appears that if this happens all North Westminster is at risk from new overflights. On days when the northern runway is being used for landing, new much shorter routes between a holding stack to the North West and the beginning of the glide path would become available. To reach the beginning of the shorter glide path, on these days aircraft would need to fly south, it could be over Hyde Park or perhaps further east or west.

Westminster City Council have recently written to the CAA regarding Heathrow's proposed flight changes saying that these should not be implemented at the expense of poor air quality or additional noise:

"We trust that open consultations will be held on the proposed design principles, with full transparency on modelled air and noise pollution. We also wish to see clarity on how adverse impacts will be mitigated so that the UK's air quality targets are not compromised. We also request that sufficient notice is given for consultation on any proposed changes in order to ensure that residents' voices can be heard. We also ask that all area-based noise and air quality implications are provided as part of these consultations, in order to allow us to assess the potential impacts on the residents of Westminster". *Heather Acton Cabinet Member for Communities and Regeneration Member for Hyde Park Ward*

The MA recently spoke with a BA pilot to try and understand what was going on with the flight corridors. He explained that with a reduced volume of aircraft currently landing at Heathrow the four normal holding stacks are often not in use and air traffic controls job is just route planes to bring them into line to land at Heathrow. The result is what Marylebone residents would perceive as "cutting the

corner" and over flying Marylebone.

Decarbonise Central London Retail

On the subject of pollution, Crown Estates have announced that they are to Decarbonise Central London Retail Delivery.

Facilitate Magazine reports that The Crown Estate has partnered with Volta Trucks and Clipper Logistics, its distribution provider, to decarbonise and consolidate deliveries into London's Regent Street retailers.

The move is intended to improve air quality and congestion in Central London. Launching as a trial in summer, Volta Zero the full-electric commercial vehicle manufacturer and services provider joins The Crown Estate's latest delivery consolidation scheme for its Regent Street clients as part of its continuing commitment to cut emissions in the West End.

Marylebone Diary

Marie-Louise Christophe Blue Plaque

The MA was honoured to attend the unveiling of the 70th Blue Plaque on recognising Queen Marie Louise Christophe - the first and only Haitian woman to claim that title. She lived in Britain from 1821-1824 at 49 Weymouth Street, Marylebone. The atmosphere was electric with huge crowds and fabulous music from the drums.

Meeting with Tushna Ghadially- Marylebone Mums and Dads- Seymour Leisure Centre

Cllr Tim Barnes (West End Ward Councillor and Cabinet Member for young people and learning) and Cllr Paul Swaddle (Cabinet Member for Finance and Smart City) have worked tirelessly attending public meetings and listening to Marylebone residents on design and priorities for the space for the improvement of Seymour Leisure Centre. The families and community of Marylebone are very thankful to the councillors involved for creating a new home for Marylebone Library and mixed-use spaces and services all while maintaining the buildings distinctive character and architectural features.

Meeting with Mark Kildea CEO and Annette Shiel Howard De Walden Coffee Morning HDW was a HUGE SUCCESS!

The landscape of the high street feels like it is changing once again. We were told that we will be getting our post office back a few doors down from where it once was. We were not told quite when that would be yet. Olivia Rubin and Malene Birger women's fashion have gone and there are still a few empty shops. The MA will be having another meeting soon with HDW to discuss these changes.

Brutalist Welbeck Street Carpark has been demolished

Welbeck Street car park was an architecturally notable car park built in the Brutalist style that was located in Marylebone, just north of Oxford Street. Permission was given to knock it down to replace it with a hotel. Many residents are very unhappy about this change and see it as vandalism at odds with Westminster's push to reduce carbon emissions. However, other residents feel it will be a positive change. What do you think?

it will be a positive change. What do you think?

Announcements

Celebrate the 50th Anniversary of the Soho Poly

To celebrate 50 years since Soho Poly's first production in 1972, the historic venue is throwing open its doors again for a drop-in event. Come and view an exhibition of rare production shots from its formative years (1972-1990) and a photo history of pop-up events produced since it was 'rediscovered' in 2012. There will also be information about the exciting plans for the venue's full restoration. Alongside the University community, other community partners and the general public are invited to pop in and explore the potential of Fitzrovia's 'secret' basement theatre and its radical history.

There's a chance to meet the Project Leads Matt Morrison and Guy Osborn and the wider staff team, enjoy some live performance, and celebrate one of the last remaining spaces from the post-war alternative theatre boom over some drinks and cake!

Location: Riding House Street, for a very special open house event, 29th March, 12-3pm

Full details [here](#).

The Church of the Annunciation



The Church of the Annunciation, Bryanston Street, W1H 7AH is a local hidden gem, tucked away on Bryanston Street down by Marble Arch.

Open from 11am-3pm each day during the week. the church provides an oasis of

peace amidst the hustle and bustle of the West End. And its interior is simply astonishing. Rising over six storeys high, the Annunciation is full of historic paintings, statues, and icons, and it provides visitors with plenty of space to sit quietly, reflect, or maybe light a candle. The Annunciation is therefore a wonderful place to catch your breath during a busy day, even its beauty will at the same time take it away!

You can learn more about daily services, events, and opening times at The Annunciation (as well as see some photographs) on Tripadvisor. See [here](#).

Governors wanted for WAES

Westminster Adult Education Service is seeking new Governors to join the Board.

"Having successfully navigated the pandemic and supported many adults to achieve their goals, we are now embarking on a period of organisational change, reflecting the new economic and social pattern of life as we work even more closely with employers and the community.

The Board is responsible for the strategic direction of the Service, acting as 'critical friend', to ensure it meets the needs of learners and complies with Ofsted requirements.

While we would particularly welcome applications from those with business, property or digital strategy experience, passion and commitment to the importance of our work is paramount."

Please read the WAES 2020-21 Impact Report [here](#).
For an overview of our governance please visit [here](#).

For further full details, or to arrange an informal chat please email the Clerk Jane Hadsel at jhadsel@waes.ac.uk

Proud of Westminster



WCC announce Proud of Westminster Campaign

"We want everyone to be proud of the area they live in. From correctly recycling to disposing of food waste responsibly, keeping our streets clean to removing bulky waste promptly – we all have a part to play in keeping Westminster looking its best.

Our newly- launched [Proud of Westminster campaign](#) encourages us all – residents, businesses and visitors – to recycle more and dispose of waste correctly, to act more sustainably and to keep our streets sparkling clean and safe. As a council, we are taking our role in keeping the city clean seriously, taking a holistic approach by linking together enforcement, cleaning and sustainability work.

[Read more](#) about how we can all work collectively to make a Westminster of which we can all feel proud."

West End Recovery - Future Occupiers

West End Future Occupiers is a partnership programme seeking to attract and support international brands to invest in the West End. It is being delivered by London and Partners and supported by the council, New West End Company and Heart of London Business Alliance and property owners. In December 2021, the programme had 71 Active Projects and made 30 direct introductions between potential future occupiers and property owners.

West End Recovery - Westminster Markets

There are now five markets that have wi-fi installed. Digital Training has commenced which focuses on delivering additional business and digital skills. Westminster is raising the visibility of its markets through a variety of pop-up events, and the Council is planning future night markets. Future events will look to encourage new start-up businesses, young traders under 30 and green initiatives.

In December, Christmas Markets took place across Westminster along with ceremonies for the switching on of Christmas lights. Rupert Street Market is open following a period of no traders for two years during the pandemic. The Markets team is continuing to improve sustainability across market sites.

At Tachbrook Market, Westminster Wheels has partnered with the Dr Bike Service and has a joint stall every Saturday. This allows residents to book in a bike service via Westminster Wheels and receive a free check from Dr Bike. On 31 January, the Markets Development team will host a Night Market at Newport Place in Chinatown. There will be capacity for 10 – 14 stalls predominantly filled by local businesses. The event will be broadcast in China and the UK as part of London's Chinese New Year celebrations.

Marylebone Summer Festival

The Howard de Walden Estate organises this lovely annual event which is a firm fixture on the Marylebone calendar, formerly the Summer Fayre, it provides a wonderful opportunity for new and small businesses to take a stall and spread the word about their products or services.

Any business members who would like to consider participating with a stall at The Sunday Street Party should email events@hdwe.co.uk for more information.

Date: Sunday 19th June 2022

Association Events

The Foundling Museum, 40 Brunswick Square, London WC1N 1AZ

Thursday 17 March 2022 at 11.00 am

Fee: £12.50

Over 250 years ago philanthropist Thomas Coram was horrified to discover that 1000 babies were abandoned in London each year. He decided to do something about it, not just the babies but orphans who were also struggling to survive amidst grinding poverty. Even for a relatively wealthy philanthropist it was not an easy task and it took him over 17 years, enrolling the help of 'the great and the good' of the day before he was finally granted a Royal Charter to open The Foundling Hospital in 1739. Even then, for the babies' mothers it was often a heart-rending choice, to try and cope with a baby you couldn't afford to feed or to hand it over to total strangers?

Today The Foundling Museum tells this remarkable story. On our visit we will have a private tour with our own museum guide to take us through this heart-breaking but ultimately triumphant tale. Numbers are limited so for further details and to reserve a place contact Rosemary Forgan: rosemary.forgan@marylebone.org or phone: 020 7916 9353

The Royal College of Music Museum

Wednesday, 6th April, 2022 at 11am

Prince Consort Road, South Kensington, SW7 2BS

Fee: £5 payable on the day

The Royal College of Music maintains one of the richest collections of music-related objects in the UK and Europe and, following a £3.6m investment from Heritage Lottery Fund, the completely re-designed museum opened last October. And what a feast of goodies to see, arranged in three key areas – Music is Creation, Music is Craft and Music is Performance.

Our tour will explore the creative process from the birth of a new idea to its realisation and performance. We will see the oldest stringed instrument in the world and the first guitar but the collection also includes original scores, documents, paintings and musical memorabilia. Our tour lasts 45-60 minutes (which is a standing tour) and we can then proceed to the upstairs gallery (where there is seating) housing a temporary exhibition of highlights from the collection. There is a café serving coffee or lunch on the first floor (lift access). As the event is limited to 16 places, contact Liz Queenan: liz.queenan@marylebone.org

Dates to put in the diary:

Wednesday 20 April at 10.30 – Coffee Morning

wednesday 25 May at 10.30 – Royal Regents Park Walk
Full details follow in next month's Newsletter

REGULAR ASSOCIATION EVENTS

BOOK CLUB

Wednesday 2 March 2022 at 6.30 pm
The King's Head,
13 Westmoreland Street, London W1G 8PJ

Members meet upstairs at The King's Head pub in Westmoreland Street. Anyone who is interested in joining in should contact Liz Queenan. Meetings have changed to the first WEDNESDAY of each month but still commence at 6.30. This month's choice is All My Lies Are True by Dorothy Koomson. All books read are available on paper and on e-readers. For more information contact Liz Queenan (liz.queenan@marylebone.org) or tel: 020 7486 3709.

PUB EVENING

Monday 14 March at 6.30 pm
The Prince Regent, 71 Marylebone High Street, London W1U 5JN
Continuing with our regular bi-monthly pub evenings at this popular London pub with plush bar menu and real ales. Everybody is welcome so do come along whether you are a regular or new to our pub evenings, where you will be greeted by our hostess for the evening Anne Hamilton.

SCRABBLE CLUB

Tuesday 8 and 22 March 2022 at 5.00 pm
The Duke of Wellington, 54a Crawford Street, London W1H 2HQ
The Scrabble Club normally meets in the private dining-room at The Duke of Wellington pub in Crawford Street on the 2nd and 4th Tuesday of each month, from 5 until 7, with Scrabble sets and dictionaries provided – and all levels of players very welcome. Anyone interested in joining and/or wanting further information should contact rosemary.forgan@marylebone.org or 0788 789 1977.

Mailing Address: Marylebone Association, 229 Great Portland Street, London, W1W 5PN
If you have news get in touch by emailing news@marylebone.org
[Unsubscribe](#)