



Marylebone Association

Newsletter July 2022

Dear {Contact_First_Name},

It was great to see so many familiar faces at the Marylebone Summer Fayre. It looks like another busy summer season ahead with lots of events and lots to read about below.

Association Events



ANACAPRI DINNER

Monday 18th July at 7pm Few places remaining
Anacapri Ristorante, 10 Dorset Street, London, W1U 6QR

Join us to help celebrate the 30th Anniversary of this traditional Italian restaurant. This will be outside, assuming good weather, although those who attended last year's enforced alfresco evening will recall how skilfully the staff arranged cover under giant umbrellas when the rain came down.

As previously, Emilio will provide a three course dinner, with house wine, from the A La Carte menu (with the exception of fillet steak and dover sole) all for only £40.00 per person including service. Those who have attended previous dinners here will recall the generous portions, free flowing wine and a most enjoyable evening.

Once again we will be taking advance payments for those wishing to secure a place. All members welcome both residential and business. Places are limited so to book and arrange payment please contact Lois German on lois.german@marylebone.org or by phone 0207 487 2706.

ANNUAL SUMMER WINE TASTING LUNCHEON

ANNUAL SUMMER WINE TASTING LUNCHEON

Sunday 14th August at 1.30pm

Ishtar Restaurant, 10/12 Crawford Street, London W1U 6AZ

Your Committee is delighted to invite you to our annual Summer Wine Tasting Luncheon. A delicious 3 course menu (vegetarian alternative available if requested in advance) will be accompanied by a selection of summer wines, white, red, and rose. These will also be available to purchase on the day at fantastic prices and prepaid orders can be delivered locally free of charge.


Tickets costing £40.00 per person inclusive of coffee or tea and VAT, service optional, are now available and because this is always a very popular occasion certain to sell out quickly. Numbers are limited so to be sure of reserving your place kindly contact annmariejohnson34@aol.com for further details. Advance payment will be required and a Guest List held on the door. Receipt of payment to be sent as confirmation, as unlike in previous years payment will not be accepted on the day.

We very much look forward to welcoming you to what is always one of the highlights of the Summer season.

Regular Events can be found at the bottom of the newsletter

1000th Tree for Marylebone





The 1000th new tree planting in Marylebone and Fitzrovia took place in Blandford Street on a rather grey and drizzly June morning. Mark Gazaleh, a trustee of Westminster Tree Trust and committee member of Portman Village and Marylebone Association organised the event. He has been responsible for encouraging and co-ordinating most of the tree planting in our area since the initiative commenced in 2009.

The event was part of the W1W tree planting initiative and the tree planted was a Ginkgo biloba, sponsored by The Portman Estate, Howard de Walden Estate and Concord London.

In a well attended ceremony we heard from Peter Ruback, chair of the Westminster Tree Trust and the Lord Mayor, Cllr Hamza Taouzzale. Some interesting tree facts were given by Cllr Karen Scarborough and then by Alan Titchmarsh MBE.

We heard that green streetscapes are proven to reduce anti-social behaviour and the impact of harmful traffic pollution, as well as encourage walking and have a recognised positive impact on people's mood. They also increase the sense of neighbourhood collaboration in taking care of the health of the trees and the local environment. Trees also provide a visually calming element in a traffic blighted urban environment. [Click here to watch Alan's motivation video.](#)

The planting event included plenty of useful pedagogical opportunities for local schoolchildren and indeed there were a number there from St Vincent's Primary School. The children were fascinated that Ginkgo trees originate from well before the dinosaurs. Many tree questions were answered by Alan Titchmarsh and the Westminster Tree officers.

Also in attendance were Councillors Ian Rowley and Barbara Arzymanow; Yael Saunders, Chair of the Marylebone Forum; Michael Bolt, MA Chair and Barbara Corr of the Fitzwest Forum, showing how embedded in the community the tree planting project has become. Afterwards refreshments were offered for all attendees at Durrants Hotel. For further details of [click here](#).

Testing Times for Developers



In a forecast perhaps of things to come, plans for 60 homes in Belgravia have been rejected by the new Labour majority WCC Planning Committee. This was in spite of it coming in with officer recommendation for approval. It was refused primarily on the grounds of insufficient affordable housing although the applicant's consultant had submitted that the scheme would not be profitable with any increase on the 4 affordable units offered.

Further, the developers had decided to knock down rather than refurbish the building, as the existing building had "fundamental flaws." The committee was also concerned about the lack of any play space as the units were ostensibly designed as family homes.

All this was contrary to what appears in the Westminster Labour Group manifesto and comes a matter of weeks after the new council leader, Adam Hug promised to “end the cosy relationship with developers”. He had gone on to say that “the planning system had become dominated by the power of property developers who often set the agenda at the expense of the residents.”

The developers, Native Land, expressed disappointment with the decision- “we firmly believe that the development would have brought significant benefits to the locality”. They claimed “palpable support” for the development from the local community.

The committee was evenly split on a decision but the Chair, Cllr Ruth Bush cast the deciding vote, thereby ensuring the rejection of the scheme.

All Change on the Buses



Transport for London's consultation on major changes to the inner London bus network released a few weeks ago contains some nasty surprises for those of us who use buses to get around the West End and beyond. TfL intends withdrawing many long established routes serving the West End, and the list is long : 12 14 16 24 and the 74.

This marks something of a sea change as for over 20 years, bus travel has seen a steady growth. This started with the election in 2000 of Ken Livingstone as London's first Mayor. He introduced simpler routes, cheaper fares as well as measures to make travelling by car more difficult, leading to an era of growth in bus travel. This continued under Boris Johnson and through to Mayor Khan.

By March 2017 a new bus high watermark was reached, with 8,174 peak vehicles in service each weekday. This even exceeded the previous peak in 1958 of over 7000 vehicles in service, which from that point had seen a steady decline to a little over 4000 by the 80's.

Now the reality that post covid travel and work patterns are here to stay can no longer be denied, the time has admittedly come for a shake up. There is patently a need for it - there are too many empty buses running around central London - but the surgery proposed appears to be drastic.

Overall, we are told that the plan would see a net cut of 200 buses off the schedules. Whereas this only represents 2.5-3% of the total London bus requirement the effect on the west End will be far greater than that.

Below is a summary of the routes involved and how it will affect our area:

The 16 [Edgware Rd to Victoria- direct link], 74 [to Hyde Park Corner and Knightsbridge/South Kensington and beyond], the 12 [Oxford Circus to Westminster, Elephant and Peckham] are being withdrawn completely.

Route 14 is also withdrawn - the 14 joins the 74 at Hyde park Corner running

Route 14 is also withdrawn - the 14 joins the 74 at Hyde Park Corner, running parallel to the 74 as far as South Kensington, then Fulham to Putney. The 14 is being replaced by the 414 running from Marble Arch.

The 98 is re-routed at Marble Arch to Victoria- replacing the 16.

The 6 is rerouted at Marble Arch via Oxford Circus to Bloomsbury replacing the 98.

Passengers for the 12 can use the 453, and change at the Elephant for Peckham.

The final change is the 88 - coming up from Regent Street, then onto Great Portland Street, Albany Road, onwards to Camden. The 24 is being withdrawn, so the 88 is re-routed via the 24 - from Camden via Warren Street, Tottenham Court Road to Trafalgar Square, before resuming its current route. The 88/214 change will reduce bus capacity from a double deck to a small single deck bus which would seem to be inadvisable.

The single deck route 214 will be rerouted at Camden via the current 88 to Trafalgar Square, then via the 24 to Pimlico.

So, all the current coverage of the bus network will be maintained, but many journeys that previously could be managed on one bus route will now require an interchange somewhere on the journey. These “broken links”, as the jargon has it, will vary with each bus route but are likely to affect upwards of 15% of journeys on most of these routes, and indeed on some will be a great deal higher than this.

The key question therefore is whether TfL and the Mayor need to reduce the cost of peak hour bus provision or if they do not, where is the funding coming from. If they do, then what is the least damaging way of achieving this - perhaps by trying to minimise the number of “broken links” even if this is at the expense of frequency.

As always, the key to this is in the funding, and here TfL is in some trouble, (see article below), so whatever is done will involve some significant cuts.

If you feel that these changes will impact you, can make your concerns known by [having your say](#) before 12 July. (Now extended to 7th August). Although it is usually the case that by the time the public are consulted TfL have already decided on what they are going to do, we would like to believe if enough people make their voices heard things can still be changed.

Funding for TfL



The drip-feed of extensions to TfL's funding from central government to keep transport running in London keeps being extended. And it has been yet again, after negotiators were unable to agree a formal settlement by the latest June deadline.

TfL now says that discussions with the Department for Transport (DfT) in relation to its future funding requirements are ongoing and that they remain in a position to meet its operational and contractual obligations in the near term, “while discussions conclude”.

Also another extension has been obtained from the 24 June 2022 and TfL will provide an update “in due course”.

Meanwhile London is being held to ransom with both sides publicly accusing the other of leaking letters and not negotiating in good faith. It does seem that there is more dissent at the top of both organisations than at officer level but the political rhetoric is putting a sensible funding settlement at risk, with both sides needing to win the war of words, even if this leaves the travelling public the losers.

Marks & Spencer's Store at Marble Arch



Since being granted planning by the then Conservative-run Westminster City Council last November, the proposal by M&S to level its flagship 1929 Art Deco store and replace it with a much larger 10-storey retail and office block designed by Pilbrow + Partners has been very much in the news.

We reported last month that Michal Gove, Communities Secretary, had issued an Article 31 order which put the project on hold, giving the Department for Levelling Up, Housing & Communities (DLUHC) time to decide if the government will use its powers to call in Westminster Council’s planning decision in for review.

Prior to this, the London Mayor had reviewed it but declined to take any action.

Michael Gove, however opted to launch a public inquiry after a considerable amount of lobbying from heritage bodies and disquiet expressed by a number of notable figures. Many of the objections were based on the waste from demolishing, instead of refurbishing, the old building.

The government has now confirmed that they are calling the scheme in for review. This could either uphold Westminster Council’s decision, or overturn it. The project will be examined by an independent planning inspector, who will consider all of the evidence for and against the scheme and will then prepare a report and recommendation for the government.

Meanwhile M&S said that the company is “bewildered and disappointed at Michael Gove’s baseless decision to call in the proposed redevelopment of our Marble Arch site.” adding that “Twenty percent of units on Oxford Street are vacant and the Secretary of State appears to prefer a proliferation of stores hawking counterfeit goods to a gold-standard retail-led regeneration of the nation’s favourite high street.”

A spokesman for the Levelling Up Department said: “This is a disappointing response from M&S. Call-in decisions are made in line with established policy. It is right that a project of such significance should be considered by the

independent planning inspectorate and ministers.”

The historic 1930s Art Deco part of the M&S building occupies about one third of the site- the rest is made up of a 1980s red brick building, Neale House, and around the side, a 1960s era building on Orchard Street.

West One to be Redeveloped



One demolition and redevelopment on Oxford Street that has the green light from the new regime is the West One Shopping Centre which sits above Bond Street Station.

The application includes the demolition of the second floor to fifth floor of the building with the addition of six new floors of office accommodation sitting above the retained ground and first floor. The new building would roughly double the office floorspace to 10,314sqm and would slightly reduce the amount of retail by 34sqm.

This application went to the planning committee recently and Members were concerned with the loss of daylight/sunlight to neighbours through the increase in height and also commented on the design. Despite some unease however, the application was approved unanimously - in line with officers' recommendation. At least in this case there will be no loss of any heritage worth saving.

Oxford Street - Eye Sores & Dinosaurs



We are pleased to see that rather than wasting further time and money on developing new ways to cut Oxford Street off to buses and other traffic, the new administration is concentrating on the real problem - the high vacancy rate and the poor quality of many of the shops that are occupied in the street.

Westminster Council has launched an investigation into approximately 30 American-themed sweet shops, which Council leader Adam Hug has labelled an "eye sore." The council is looking into dozens of shops across the West End for allegedly avoiding business rates amounting to at least £7.9million. Landlords.

desperate to avoid paying punitive rates on empty units, have filled many of them with the most undesirable types of tenants which lower the tone of the street and deter better quality tenants from signing up.

So far more than £100k worth of goods have been seized along with 450 vapes which exceeded nicotine allowances. The council is also investigating whether the shops have sold out of date food, sex novelty sweets, or counterfeit Wonka bars.

At present the blight is being blamed on intermediaries with the big landlords powerless to do much about it. However, the council, as Labour's manifesto spelt out, will be looking to the major property owners to "pay their fair share" towards getting the "Oxford Street District" improvement plans back on track.

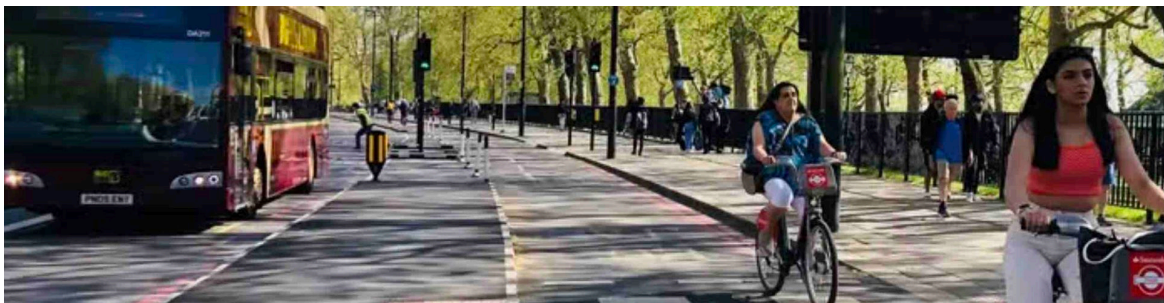
This is just the latest of Oxford Street's woes. Footfall is creeping up, but in April it was still 52 percent lower than pre-pandemic, according to the Retail Gazette. The New West End Company says the 2020/21 footfall overall in its area was at 60 per cent of 2019 levels.

Meanwhile, the Chief Executive of Marks and Spencer -no doubt somewhat miffed by the government's action over calling in their planning application to knock down and rebuild their flagship store - has said Oxford Street is "destined for extinction" after being "overtaken by tacky candy stores". Stuart Machin has claimed the iconic London street is "on its knees" and has become at risk of becoming a "dinosaur district".

He said: "When I walk down Oxford Street today, I see a stark reality staring back at me. One in five shops sit vacant, there is a growing proliferation of tacky candy stores and nearly £600,000 of counterfeit goods have been seized from hawkers this year. The effects of Covid have brought a street that was once the jewel of UK shopping to its knees."

Machin continued: "Footfall remains 30pc down on already dwindling pre-pandemic levels, with recovery in Oxford Street trailing its near cousins in Bond Street and Regent Street, both of which have benefited from significant redevelopment and investment. With inflation at a 30-year high, the pressure on both retailers and consumers discretionary income will only increase. We need to back innovation, not breed a dinosaur district destined for extinction."

Park Lane - TfL Unrepentant



The "temporary" Park Lane scheme in May 2020 is universally disliked by drivers as creating an unnecessary one lane bottleneck when coming from Hyde Park Corner northbound up Park Lane. This is ostensibly for the creation of a cycle lane which is under utilised as most cycles choose to use the quieter and more accessible route running parallel in Hyde Park. This piece of traffic engineering has long been regarded as another example of TfL's desire to undermine the ability for London businesses to be able to operate on its main roads by whatever means possible.

It is therefore totally unsurprising that the inevitable TfL "consultation" failed to

It is therefore totally unsurprising that the inevitable TfL consultation failed to change anything much. TfL tell us that they received a range of views about the Park Lane scheme - we are sure they did- but which ones did they pay any attention to? They go on: "Following our monitoring of the scheme and feedback we've received; we intend to make some improvements."

Unfortunately these "improvements" consist in the main of further embedding the present hopeless scheme with works to retain the cycleway, extend the bus and taxi lanes and provide additional coach parking. Congestion is therefore guaranteed to continue for long into the future. We wonder what other "temporary" schemes inflicted upon us during the Covid period are destined, after a "consultation", to continue to remain with us?

Construction works are planned to start the week commencing 20 June and will run until 19 August.

More information about the changes is available at <https://haveyoursay.tfl.gov.uk/park-lane>.

Marylebone Restaurants - Too loud?

New data released from SoundPrint, a member of the World Health Organisation's Hearing Forum, reveals that London restaurants are the loudest in Europe, second worldwide to San Francisco.

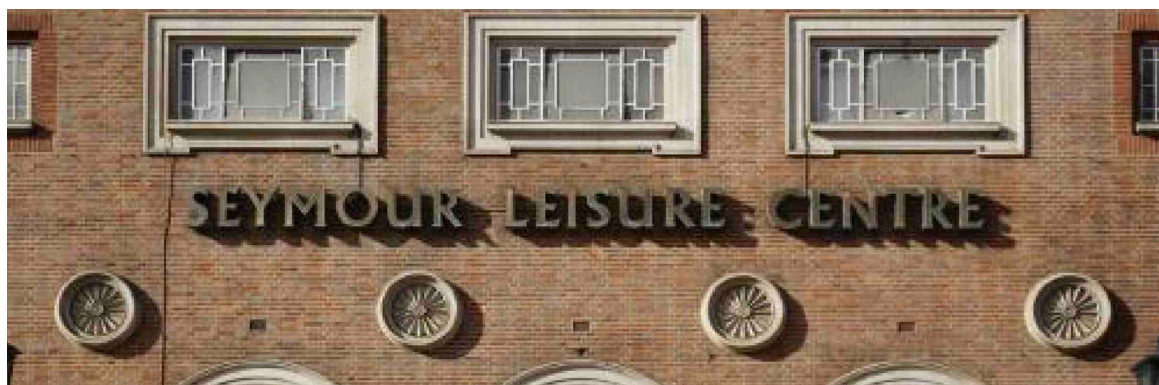
SoundPrint measured noise and found that 50% of London restaurants during peak time (6pm - 10pm) exceed noise levels that can endanger hearing health, while 80% of restaurants are too loud for conversations.

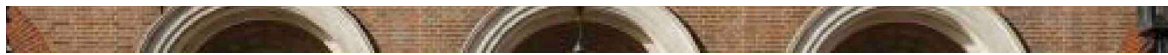
Certainly that does appear to be the case for many of our own restaurants in Marylebone. However, the good news is that several restaurants in Soho, Marylebone and Mayfair make it on to the new Quiet List of restaurants most conducive to talking.

The [Quiet List](#) of restaurants, featuring neighbourhoods such as Marylebone is to be released this month. This features restaurants from over 1,000 submissions that have had their audio decibels measured, so they are conducive to conversations.

Amongst other, the restaurants include the Michelin star Tamarind, French restaurant Gauthier, Ormer Mayfair, Locanda Locatelli and many more.

Seymour Centre - Ongoing Consultation





The project team who are leading on redevelopment plans for the current leisure centre on behalf of Westminster City Council, have recently conducted a series of online and drop-in consultation sessions.

Ever since initial plans were unveiled, concern of residents/users of the current leisure centre has centred on the loss of core facilities in favour of a multitude of activities being conducted within the single site.

As an example, the existing sport and leisure activities will need to share space with a library and a cafe. Oddly, feedback suggests the latter will take as much floor space as the former.

MA members will be all too aware of the unloved, nomadic existence of the Marylebone Library over recent years. Whilst the proposals indicate a welcome commitment to a permanent home for it, a serious library with space for quiet study and research does not appear to be on the cards. Moreover, a large cafe inside the redeveloped space is going to be in direct competition to existing coffee shops in the proximity of the Centre, many of which may lose the custom arising from users of the sport/leisure facilities.

The Council may well see merit in such revenue-raising ventures, but, our local cafes have struggled through the pandemic and still are struggling as the cost of resources and staff shortages bite. It would be an own goal for the Council to be in the game of quickening any cafe's demise, resulting in vacant commercial units on our streets and the incumbent loss of business rates.

Another activity to be squeezed into the Centre, is a registrar's office. The project team admit that space is an issue, yet they consider it sensible to provide this facility, even though the old Marylebone Town Hall - an iconic location for civil marriage - is a short walk away.

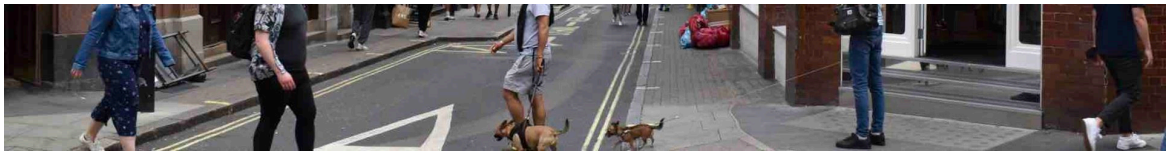
One of our residents was advised at consultation that people think it is too expensive to get married at the old Town Hall and not everyone is comfortable getting married in such grand surroundings! Surely, if there is a need to provide a simple, functional space for registration activities, this can be accommodated within Council offices on Victoria Street, rather than seeking to attempt the quart into a pint pot trick inside the Seymour Centre.

Residents within the association area will have a range of views on the proposals and it is important that all are heard. The most consistent viewpoint that we have heard so far is a strong sense that the Seymour Centre is first and foremost a sports centre. However this core activity (of clear health benefit to the local community) will, it seems, be compromised by Council plans to offer a multi-functional series of spaces that may end-up with the Centre being a Jack-of-Trades and master-of-none.

Therefore there are significant concerns here and this could prove to be an early test of the new Council Leader's promise to amenity societies like the MA and HDRA to place residents front and centre of a more meaningful consultation process.

Soho Vision Put on Hold





Continuing on the subject of consultations, we are pleased to report that the highly contentious consultation on the council's Vision for Soho has been put on hold. The likely effect of the proposals for extension of permanent al fresco dining on Soho residents has previously been reported in this newsletter; as has the way the residents felt that their voice had not been heard in the consultation, so no doubt many are relieved at this reprieve.

Of course where the review actually leads remains to be seen, but it is certainly a chance for the new administration to show that it is not only listening to residents, but is willing to take positive steps to safeguard their amenity.

Cllr Patrick Lilley said: "We hope this marks a turning point in the relationship between WCC with our communities in Soho. The future will include many challenges but by listening and talking regularly we can better serve our residents".

"Monitoring of noise, air and traffic is our next priority and we hope to work with you all, urgently on this and see how we can actually make Soho cleaner, safer and liveable while still contributing to the greater good for all its stakeholders".

The announcement is reprinted in full below.

"Our communities are at the heart of everything that we do as a council and we want our residents and businesses to know that we are listening and acting on their concerns.

In Soho local people are rightly anxious about noise pollution, air quality, and the traffic that blights their neighbourhood.

So, we are pausing the previously proposed consultation plans, Vision for Soho, to re-examine how these issues can best be monitored and tackled in the interests of both the residential and business communities that make Soho such a special and dynamic place to live.

We want Soho to remain a vibrant centre for a diverse range of the capital's creative and hospitality businesses for years to come but not at the expense of those that call it home."

Councillor Geoff Barraclough, Planning and Economic Development. Patrick Lilley Lead Member for Soho with Cllrs Paul Fisher and Jessica Toale.

Grosvenor Square Revamp



It is widely acknowledged that there is a green space deficit in central London, therefore what happens with what we do have here is always of great interest. So a project headed by Grosvenor Estates to create a new environment in Grosvenor Square, "making room for both people and nature", would appear to be a welcome proposal.

Grosvenor Square will be 300 years old in 2025 and the new makeover will only be the fourth substantial redesign in the park's 300-year history. When the square was first laid out in 1722 it was as a public space, however in 1835, an act of parliament allowed the Square to be reserved solely for residents of the houses around the Square. After the Second World War many private properties had been swept away, and a particular problem occurred in 1946, when a memorial to President Roosevelt was proposed for the park. This finally resulted in a new Act of Parliament that permitted the statue to be erected, and the park to be opened to everyone.

So now the Square is again a public space, but it is hardly that attractive to linger in and is mainly used by pedestrians as a cut through.

The new design was created for Grosvenor by architects Tonkin Liu in conjunction with horticulturalist Nigel Dunnett, ecologist Gary Grant and heritage expert Cordial Zelda. Architects BDP have been newly appointed to take forward the next detailed designs for the project.

The scheme has received planning consent from WCC with all members of the committee voting in favour and councillor Robert Rigby describing it as, "one of the most exciting proposals I have had to debate."

Now that this scheme has been given planning approval, work is expected to start in 2024, and depending on how they finalise the plans, the works should last around two years.

HDRA's Celebration of The Queen's Platinum Jubilee



On Sunday 5th June, the Harrowby and District Resident Association (HDRA) residents got together in Molyneux Street to mark the 70 years of Her Majesty's rule as well as make the most of an opportunity to be together as a community after a challenging couple of years.

A large marquee provided a focal point for the occasion, but, luckily it wasn't needed as rain cover. Residents, including many with extended families plus

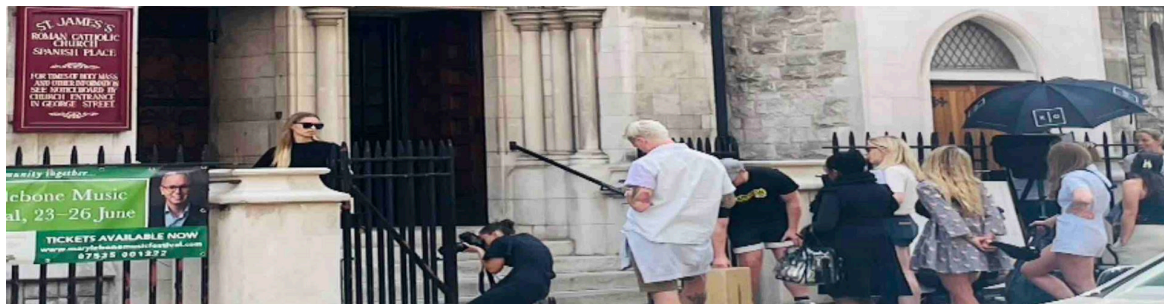
individuals and groups from beyond our "territory" enjoyed food and drinks, a magician, face painting and the occasional tune from a brass band quintet.

MP Nickie Aiken led the Loyal Toast, the new Deputy Lord Mayor of Westminster was also present - and Councillor Barbara Arzysmanow cut the specially-made Jubilee cake with a ceremonial sword loaned from one of the residents (we didn't ask too many questions about why this was in her possession!).

Members of the Ward Police team also dropped-in and entered into the community spirit. Many neighbours mucked-in, both before and after the event to hang bunting, bake cakes and other great food and to collect chairs and tables from the Sylvia Young Theatre School and the The Grosvenor Casino.

The whole event benefited from very kind sponsorship and support courtesy of the Marble Arch BID, the Portman Estate and York Estates. The whole day seemed to be enjoyed by everyone, young and old, all making the most of being able to mix freely once more.

Marylebone Diary



Marylebone really is the place to be, from NEXT fashion shoots on the steps of St James Church to music videos being shot on Devonshire Place. June has certainly had its fair share of excitement.

Marylebone Summer Festival was alive and kicking this year. The festival included an open-air cinema, a dog show, alfresco bars, live music and performances, a Ferris wheel and family friendly activities along with many food, fashion, sports and craft stalls. Even the Covid vaccine bus put in an appearance! The event was organised and funded by Howard De Walden. MP Nickie Aiken came along to enjoy the fair and met with members of the Marylebone Association committee. The Marylebone Association had a stand and it was a great opportunity to listen to residents' concerns about the area, some of which included road closures, mobile phone theft and rubbish hotspots.

Marylebone Music Festival in our beloved Manchester Square took place over last weekend which was a joy. Rob Rinder who is president of the festival narrated and Sue Perkins conducted the Orion Orchestra playing Peter and the Wolf to the delight of the children who attend St Vincent's school. The Wallace Collection brings 'Inspiring Walt Disney' this month with the magic of Disney revealing the surprising and enchanting connections between these two artistic movements.

Summer in Portman Square arrived with street food, refreshing drinks and inspiring wellness workshops, the next one will take place on July 5 t and will feature live Wimbledon screenings. Lina Stores had a big party to celebrate their new store on Wigmore Street.

Announcements

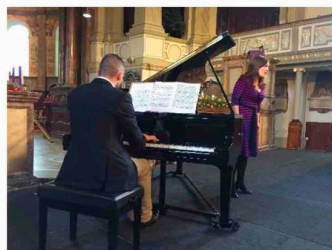
Become a Friend of Westminster Archives

The Friends of the City of Westminster Archives Centre are individuals interested in our cultural heritage and Westminster's history. Become a Friend today and enjoy:

- An opportunity to make new friends and be involved in voluntary work with preservation and indexing projects, learn new skills and use new tools
- A social calendar of cultural visits
- A chance for informal interaction with the Archives and a chance to see behind the scenes
- 20% discount on lectures and publications
- The chance to raise awareness of and promote the Archives' work

To become a Friend, simply [download and fill in this application form](#), or visit the Westminster Archives page for more detail

St Marylebone Festival 17-22 July



St Marylebone Festival takes place from Sunday 17 to Friday 22 July this year, organised by our friends at St Marylebone Parish Church as part of their Changing Lives project. A full programme of events has been announced, telling community stories through a creative mix of music, dance and drama.

Many of the events this year draw on South American and Spanish culture; some of the South American 'Liberators' of the nineteenth century, such as Simón Bolívar and José de San Martín, were Marylebone residents.

A South American Soirée on 22 July is one of the festival highlights. Musicians from St Marylebone join with South American musical colleagues, to tell the stories of Argentina, Peru, Venezuela and Chile through music, dance and poetry, with pre-concert cocktails and canapés.

Experience the sultry sounds of Buenos Aires at the Tango Nueve evening on 18 July with Joanna MacGregor and her band of musicians. And you can learn how to tango yourself with teachers from local dance school Arthur Murray Dance Studios at a workshop on 20 July, followed by a performance from the London

Iango Orchestra.

Local festival patron John Rutter will lead a Come and Sing choral workshop; plus there are performances from The Joyful Company of Singers and the English Folk Dance and Song Society.

There will be a special screening in the church of the film *Evita* starring Madonna, while you can also join walking tours exploring the London of famous Marylebone figures Florence Nightingale and Charles Dickens.

For more information on these events and to book tickets please see their website.

Summer in the Square



Enjoy the beauty of Portman Square Garden and the latest action from Wimbledon on our big screen with a drink in hand from our fully stocked bar, picnic or a hot lunch from our two or three specially selected street food stalls. You can also book into one of our workshops or wellbeing activities if you'd like to relax or pick up a new skill.

Make the most of your summer, change your lunchtime habit, meet up with friends after work or just while away an English summer day at Summer in the Square. Starts 5th July from 12 noon.

School of Architecture Summer Show

Pop into this free exhibition celebrating the work of the University of Westminster's Architecture and Design students which includes a range of work from first year to graduation. The show draws on a vast body of developmental and finished work imagined and realised over the course of the last academic year.

The show will be open until 11 July from 9.00 – 17.00 each day at the University of Westminster, Marylebone Campus, 35 Marylebone Road so why not take a look in your lunch break and be inspired. Book [here](#).

West End LAMDA Teacher

The West End LAMDA Teacher Awards have been announced. Jane Morrison, B.A. (Hons), PG Dip, Dip

The west End LAMDA teacher: Amanda-Jane Manning B. A (Hons), PG Dip, Dip RAM, ALAM Dip is based in W1. Amanda-Jane specialises in teaching the LAMDA Exam syllabus to children aged 6-18. Subjects include Acting, Verse & Prose, Shakespeare, Reading for Performance, and Musical Theatre with a 100% pass rate.

Amanda-Jane also coaches children for School entrance exams, interview techniques, public speaking skills (developing essential skills for constructing and delivering talks, presentations, and speeches), and coaches' students for Theatre school. Amanda's students have successfully gained places at Francis Holland, City of London School, Queen's College, Art's Educational School, St Paul's Girl's School, South Hampstead High School, Sylvia Young's Theatre School, and University places at E15 Acting School, Central School of Speech and Drama, LAMDA and RADA. Email amandajanemanning@yahoo.co.uk Telephone: 07908846052 www.westendlamdateacher.co.uk

The Marylebone Theatre



The Marylebone Theatre is London's newest cross-cultural, performance space. Once known as the Steiner Hall (near Regents Park), the theatre has undergone an extensive refurbishment, as a result of which it is now a versatile, state-of-the-art space launching with an exciting programme of theatre performances, concerts, dance and spoken word events. Opening on 29th September with 'frighteningly vivid' the unfinished Schiller play. [Sign up](#) for exclusive news and 10% off ticket prices.

Association Events

REGULAR ASSOCIATION EVENTS

BOOK CLUB

Wednesday 6 July at 6.30 pm
The King's Head,
13 Westmoreland Street, London W1G 8PJ

Members meet upstairs at The King's Head pub in Westmoreland Street. Anyone who is interested in joining in should contact Liz Queenan. Meetings have changed to the first Wednesday of each month but still commence at 6.30. This month's choice is Fall. The Mystery of Robert Maxwell by John Preston. All books

read are available on paper and on e-readers. For more information contact Liz Queenan (liz.queenan@marylebone.org) or tel: 020 7486 3709.

SCRABBLE CLUB

Tuesday 12 and 26 July 2022 at 5.00 pm

The Duke of Wellington, 54a Crawford Street, London W1H 2HQ

The Scrabble Club meets in the private dining-room at The Duke of Wellington pub in Crawford Street on the 2nd and 4th Tuesday of each month, from 5 until 7, with Scrabble sets and dictionaries provided – and all levels of players are very welcome. Anyone interested in joining and/or wanting further information should contact rosemary.forgan@marylebone.org or 0788 789 1977.

PUB EVENING

Monday 11th July at 6.30pm

The Prince Regent, 71 Marylebone High Street, London, W1U 5JN

Continuing with our regular bi-monthly pub evenings at this popular London pub with plush bar menu and real ales. Everybody is welcome so do come along whether you are a regular or new to our pub evenings, where you will be greeted by our hostess for the evening Anne Hamilton

Future events – put the date in the diary now

Saturday, September 24th pm

A walk around Historical Marylebone with our Blue Badge Guide Janice Liverseidge. Full details in the August newsletter.

Mailing Address: Marylebone Association, 229 Great Portland Street, London, W1W 5PN

If you have news get in touch by emailing news@marylebone.org

[Unsubscribe](#)