



Marylebone Association

Newsletter January 2023

Dear {Contact_First_Name},

I hope everyone has had a very Merry Christmas, watched too much TV, avoided all forms of exercise, had at least one petty family argument and got some time to relax.

Looking back on the last year it has continued the recent tradition of highs and lows.

As an association we've had a lot to celebrate. We have welcomed many new joiners, have had some great get-togethers and have helped each other mark many happy events. However, we said goodbye to a number of old friends and seen others battle with personal or health issues, either themselves or in their families or wider communities.

Thankfully, the threat of Covid receded, normal social life resumed and travel started again. However, political chaos, global conflict and a cost-of-living crisis came in their place.

We don't know what 2023 will bring. However, if we approach it in the same way as we did the challenges of 2022, working as a community, supporting each other, I know we will continue to thrive.

Thank you to the Marylebone Association committee, the Marylebone residents and businesses. We have some big challenges ahead of us but they are matched by great opportunities and I know we will surprise ourselves with what we can achieve.

Happy New Year

Julie Redmond

Chair

Regent Street





Westminster City Council is proposing to make the “temporary” carriageway closures on Regent Street permanent: “We are establishing a joint project team to deliver a permanent scheme for Regent Street, building on the success of the temporary scheme currently in place.” “Success” or otherwise in this case appears to be in the eye of the beholder.

At this stage it is a proposal only and Westminster Council is seeking engagement with local resident groups, businesses, and neighbouring property owners and commenced this process with consultations with local groups in December. We therefore assume that this engagement will still include within it the option of full removal of the existing works.

Although this is a Westminster consultation it is carried out in partnership with the Crown Estate, and the majority of the work will be funded by Crown Estates who own most of the properties along Regent Street.

The temporary changes were initially introduced without consultation in response to the COVID crises in 2020 as temporary measures to comply with social distancing. However, as stated at the time in our newsletter, we suspected the plan was always just to use this as a first step in making a scheme to narrow the road here permanent.

The fact that the scheme has demonstrably increased congestion has done nothing to deter the desire to make it permanent, for the simple fact that the more highway that the Crown Estate can take over for pedestrians, the more attractive they feel it will be to shoppers. This formula is however not to be found anywhere in the consultation, where only the comfort and safety of pedestrians and residents is claimed to be the concern. Neither is the point confronted that by taking over a substantial part of the existing highway the traffic flow through central London is impeded. In fact this connection is refuted.

Although it is apparent to all who need to use Regent Street to actually travel through the area that this has now become very difficult, the data being presented claims that there has been very little change to traffic flow. This obviously needs to be questioned as it flies in the face of direct experience - where it is apparent that the changes have caused increased congestion as all traffic is now forced into single file and to move at the pace of the buses and when they stop, the traffic stops. This in turn causes congestion on the side roads, particularly in Soho as the volume of traffic able to turn into Regent Street causes significant tailbacks, and this reduces further the air quality in these areas.

Also, there are mixed views on the additional street clutter and planters that the widening has brought in its wake, and there has been no heritage assessment on the impact of these changes on one of the most historically important streets in London. It is claimed by the Crown Estate that the “improvements” will make Regent Street more park-like, not only does this really seem rather wide of the mark, but it also appears to ignore the street’s historic function and purpose.

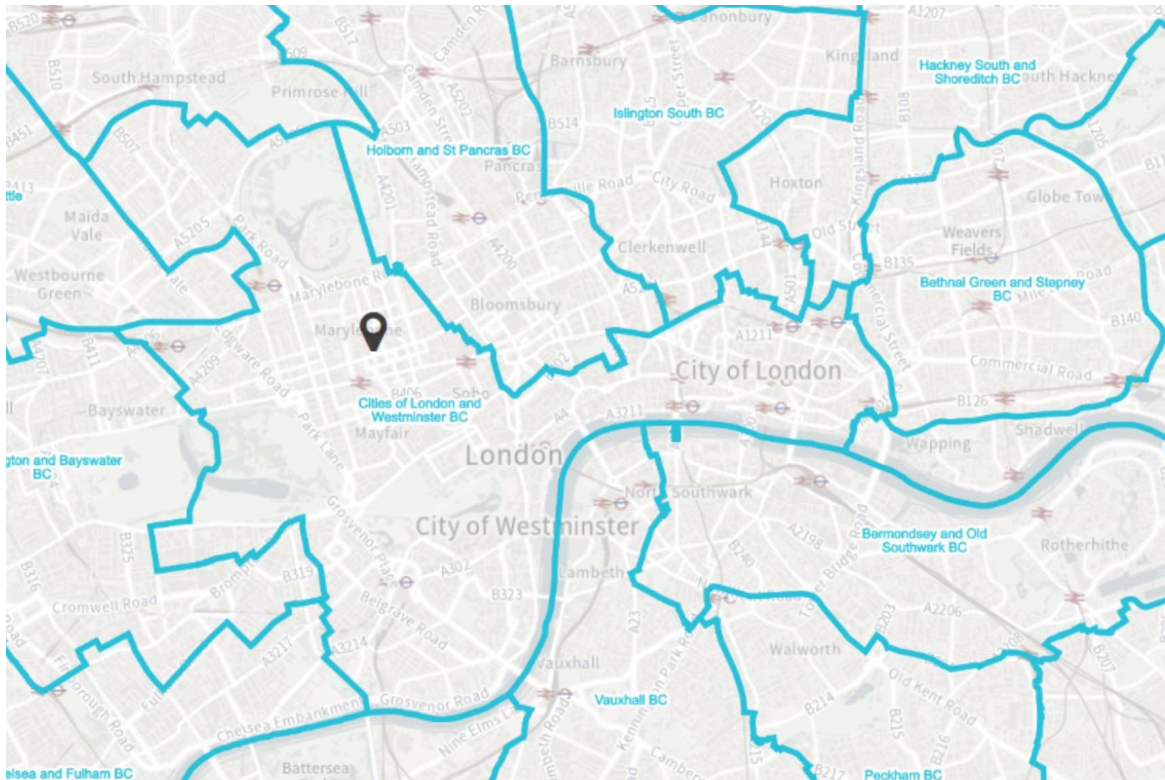
In addition to the consultation on the permanent scheme announced in December there is also presently another consultation on the Traffic Management Order to enable the continuation of the temporary scheme, made necessary due to the overrunning of the time allowed in the original temporary traffic order. This

consultation can be accessed on the link below. The situation is somewhat confusing as this refers to the extension of the temporary works as permanent. This is because WCC can no longer apply for any further temporary extensions and therefore needs to formalise the current arrangements to allow time for the main consultation on the permanent proposals for the street.

You can read the documents on renewal of the existing temporary road closures [here](#).

Any objections or other representations about the proposals should be sent in writing to the Council's agents, WSP Traffic Order Team, 3rd Floor, WSP House, 70 Chancery Lane, London, WC2A 1AF, or by email at tmo.westminster@wsp.com quoting reference 7730/ND, by 18th January 2023. All objections must specify the grounds on which they are made.

Revised Constituency Boundaries



The Parliamentary Boundary Commission for England (BCE) has published its revised proposals for changes to our constituency boundaries. Readers may recall that previously the Boundary Commission had reported on its initial proposals for new parliamentary boundaries within the Westminster area.

It is widely accepted that revision of some sort is necessary as the present boundaries are too small by the new constituency measures and, therefore, need to be enlarged.

To fulfil the statutory requirement to get a balance between the number of electors in each of the constituencies; 69,700 is a minimum, 77,000 a maximum, the BCE came up with a radical proposal to split the City of London from Westminster and to couple it with Islington South thus breaking the bonds between the City of London and City of Westminster which have been in place since the City of London ceased to be a parliamentary constituency in its own right in 1950. The present boundary reflects a unique historic connection between the two cities. Taken together, the City of London and the City of Westminster continue to represent the political, civic, and business voice of central London.

In addition, the area north of the Marylebone Road that includes Baker Street and Marylebone stations was to be categorised as Camden and St Johns Wood.

The original proposals excited much opposition and during the live hearing in 2022 this was made clear by a number of witnesses, including Nickie Aiken MP and Cllr Tony Devenish, the London Assembly member for our area, West Central.

The BCE has listened and substantially revised its latest proposals. These revisions will now retain the unique historical and civic links between the City of London and the City of Westminster. View the map of the new boundaries [here](#).

Docking Dockless Bikes

Few have been able to understand why the operators of the dockless bikes were ever allowed to have their bikes dumped randomly all over the city. WCC are now working with the GLA and officials at TfL as part of the “longer-term strategy”.

With other boroughs moving towards a model of fixed bays, WCC has met with operators for talks about this. Density and coverage of bays are considered to be the primary factors when trying to deliver an effective scheme. Smaller but more frequent bays are optimal for the scheme to work, rather than larger and less frequent bays.

Operators, we are told, have provided comprehensive data sets on their operating models, including location hotspots and parking data. This will help WCC to identify the total number of bays needed to meet demand and accurately predict the potential loss of revenue from the repurposing of any parking bays across Westminster.

Rubbish Reporting





A number of locals are working to ensure our streets remain clear of unsightly problems and blights. One of them is MA committee member, Mark Gazaleh, who met with WCC's researchers on a walkabout of our area last month to confront ongoing surveying issues and the use of the Report It tool. For better or worse, Report it is the primary avenue for all complaints regarding street clutter and rubbish. (To participate in the current survey see article under Announcements below).

You too can help by using Westminster's Report It service where your mobile phone or computer logs concerns and locations. The information will assist the city address long-term issues and hot spots where residents would like to see action.

Mark Gazaleh writes: "Informal feedback suggests rubbish problems seem to be the most troublesome and unresolved. In comparison, broken paving, defective streetlights, abandoned bicycles and graffiti issues seem to be cleared comparatively quickly. However, is this really an accurate picture? Westminster is now seeking feedback on the local situation and the effectiveness of this reporting tool."

"Your input would be helpful to ensure Marylebone's opinion is documented and plays a part in how the ReportIt tool works in the future".

You can participate in the short online survey through the following [link](#). For further information please contact: reportitreviewteam@westminster.gov.uk

24 Hour McDonalds

McDonalds to open 24 hours a day - rarely do these words give comfort to residents living nearby who are only too aware of the resulting potential for late night disturbance and noise. So far 24-hour locations in Westminster have been in very central areas - Leicester Square and the Strand.

Now McDonald's at 178-180 Edgware Road have applied to stay open and sell hot food 24 hours a day and the application suggests that if granted there will be 24-hour delivery using Deliveroo & Uber Eats. The police licensing team are looking to oppose the application based on crime and disorder.

Dates for representations to be received by the Licensing Authority was 28 December 2022 but concerned members can email our licensing committee member Guy Austin- guy.austin@marylebone.org, who will be able to log any additional comments.

The link to the application is below:

22/11557/LIPV | Premises Licence - Variation | Pending Decision | 178 - 180 Edgware Road London W2 2DS (westminster.gov.uk)

Seymour Leisure Centre - Questions

Stage 2 of the detailed design has been approved with the planning application due to be submitted. The design incorporates separate gendered changing facilities following community feedback.

Due to the many questions raised on the adequacy of the swimming pool proposals a question has been raised as to what bodies within and outside the council have been consulted about the design, e.g. Swimming England and Sport England, and what has their response been? Further information has been requested on the present proposed cost of the development of the Seymour Centre, incorporating the latest revisions.

As stated previously, nobody wishes to delay the Seymour Centre redevelopment, which has crept forward through various stages of design work and consultation over a number of years now. That said, a feeling that a proper library, centrally based, with a street level frontage a the key community asset that could be better accommodated at Marylebone Square rather than Seymour Leisure Centre seems to be gaining ground. Many local residents, the Howard de Walden Estate and our local MP are now engaged in asking that community space at both sites receive proper attention.

Unfortunately, this is meeting stout resistance from WCC who do not wish to revisit a scheme previously shelved and see the benefits of substantial cost savings in having all the services providers located under one roof.

Paddington Street Gardens - Problems



Popular play equipment in Paddington Street Gardens was recently cordoned off for months before being replaced by equipment for much younger children. Older children do not now use much of the equipment for after-school play. There was no notice or consultation about this with the local community.

The local Parents group, Marylebone Mums and Dads, took up the issue with local councillors and WCC expressing disappointment that much used playground equipment had been inexplicably changed for the worse. In addition equipment that has been broken and out of use for much of the past year has failed to be repaired while the playground had been shut for the installation of new items.

The lack of notification or engagement with local families was particularly

The lack of consultation or engagement with local families was particularly disheartening considering that the Marylebone Mums and Dads group is well known and very willing to engage and give opinions on what kind of equipment is suited to the area.

WCC responded with reasons relating to health and safety of the old equipment and are revisiting the suitability of the new equipment that has been installed. The broken equipment has now been fixed.

The Marylebone Mums and Dads group along with the Families Representative of the MA, Niamh O'Keefe, will be engaging with WCC on broader plans relating to Paddington Street Gardens which are expected in 2023, alongside our local councillors who have been supporting the local community on the issue of the equipment change and lack of engagement.

If you would like to join the Marylebone Mums and Dads which is a supportive community for local parents, please email: marylebonemums@gmail.com

West End Bounce Back

The outgoing chief executive Brian Bickell of Shaftesbury has said he is "remarkably optimistic" about London's West End. Shaftesbury, as previously reported, is party to a £3.5 billion merger with Capco, due to come into effect in early 2023. "People want to be back with their colleagues and they want to go to the pub after work," he said.

The Estates Gazette reports that Shaftesbury's results showed a powerful return to profit and rising income, following a period of challenges, the likes of which Bickell said were "unimaginable" three years ago. Shaftesbury however came through the pandemic having kept all its occupiers in place and with few vacancies. "The bounce back 'in some ways doesn't surprise me', he said. "The West End has a unique mix. It is more than a shopping destination, more than a cultural destination. It has global appeal."

"In most cities, you get completely fragmented ownership. Here we work together," he said with a nod to the landed estates, as well as quoted Propcos with which Shaftesbury is neighbour. "You need to be involved in the whole of the West End. It's a strong ecosystem. You need each other."

Elizabeth Line Problems

The Elizabeth line finally reached full operation status in November 2022, and now less than two months later, a strike has been announced by the TSSA union, with the walkout of its members due to take place on Thursday 12th January 2023. In addition, action short of a strike (effectively comprising a 'work to rule' instruction) will run from 12th January to 28th February 2023.

TSSA - Transport Salaried Staffs Association - members work in essential roles, including Traffic Managers, Service and Infrastructure, and Incident Response Manager grades. Industrial action follows a successful ballot which closed on 22 December, in which members voted 90% in favour of strike action and 95% in favour of action short of strike on an 80% turnout – comfortably passing the legal threshold required for industrial action.

Commenting, TSSA Organiser, Mel Taylor said: "Our members have sent the

company a very clear message that they are not prepared to be pushed around on pay and pensions.

Elizabeth line staff employed by RfLI and members of the Prospect Union have also voted for strike action, but a date hasn't been set for that yet. That strike would affect maintenance workers, so is less likely to have an immediate impact on passenger services.

Howard de Walden Goes for Tech

The Howard de Walden Estate has recently seen an increase in lettings to science and technology businesses including so-called 'medtech' tenants and is now mapping out a new occupier strategy targeting businesses supporting the life sciences industry in London.

The Estate has cash to invest, as it has continued selling assets, including residential, to "recycle that capital back into what we think is a more productive use."

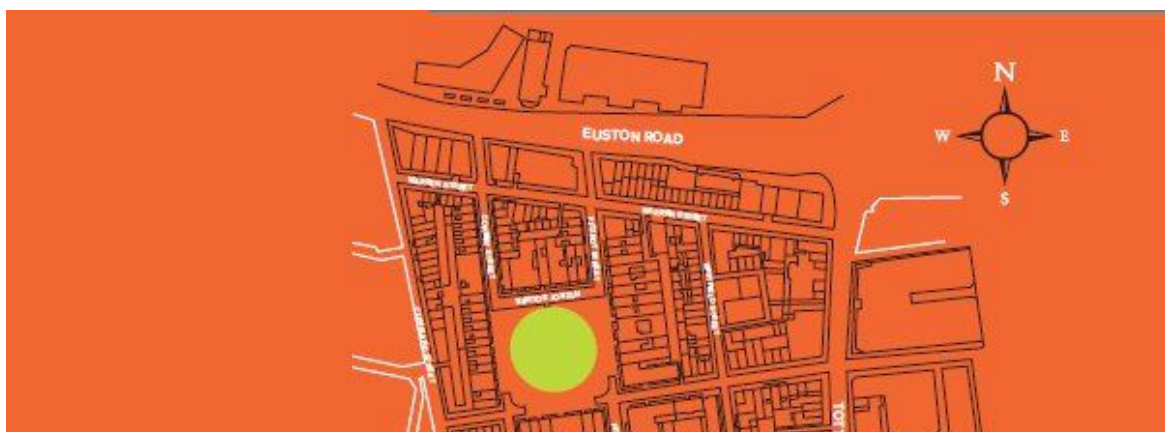
The ultimate aim is to develop a life science hub that sits alongside "the three acknowledged healthcare campuses" of Imperial in White City, King's Health Partners near to London Bridge and UCL in Bloomsbury.

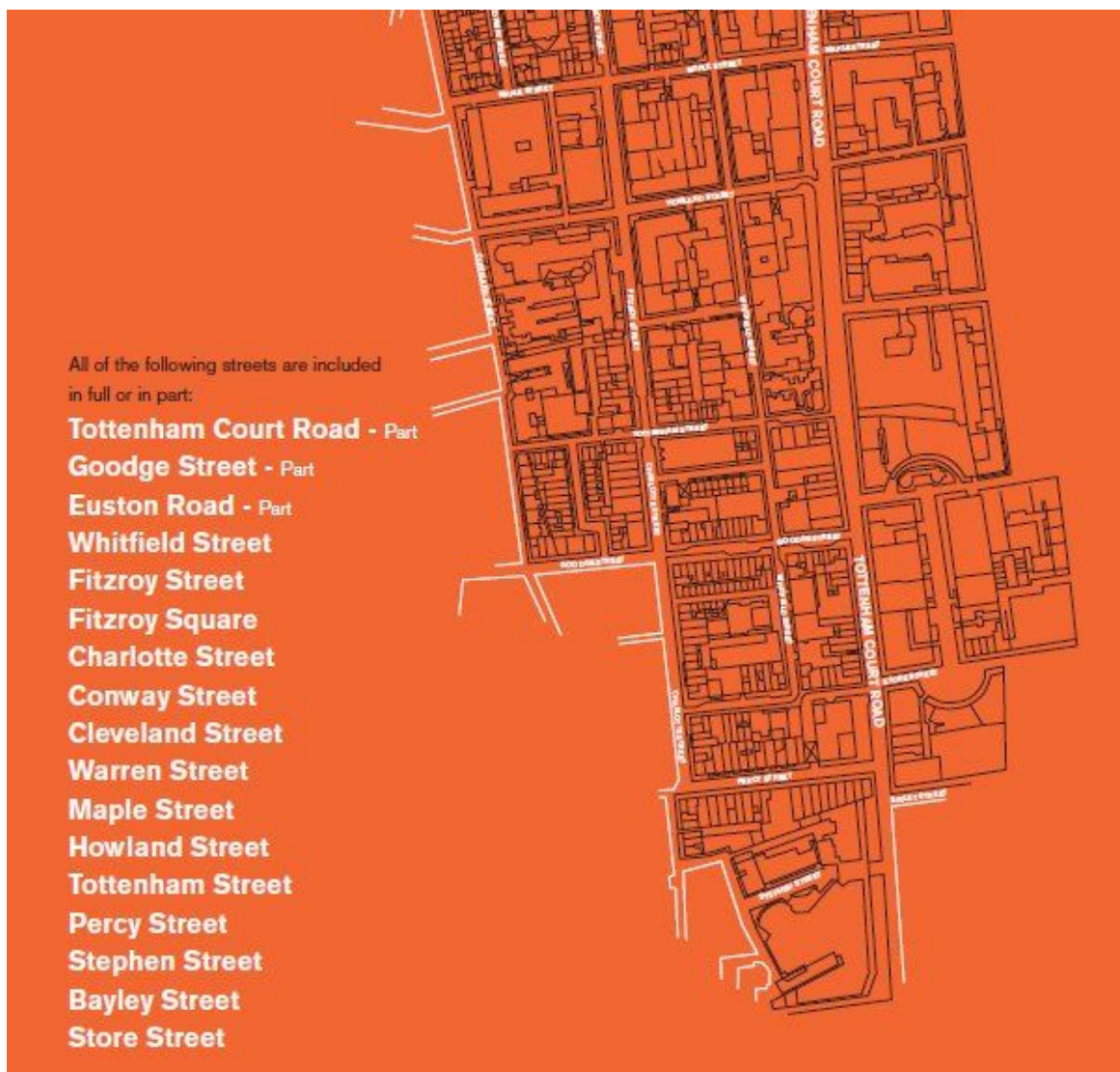
M&S Stops Home Deliveries

Although no decision has yet been made by the Secretary of State, Michael Gove, regarding the M&S Marble Arch application for the demolition of its existing Marble Arch site, M&S have gone ahead and announced the "imminent cessation" of the home delivery service from the Marble Arch store.

The discontinuation of the home delivery service will be a blow to a number of local residents- but no matter what the ultimate decision on the future of the Marble Arch site, this was something that was always on the cards.

More Commercial in Fitzrovia





A draft plan for the public realm in Fitzrovia East was launched by The Fitzrovia Partnership at an invitation-only event at 80 Charlotte Street in November.

The Fitzrovia Partnership is a Business Improvement District (BID) in partnership with Camden Council. A business improvement district is a defined area within which businesses are required to pay an additional tax in order to fund projects within the district's boundaries. The BID is often funded primarily through the levy but can also draw on other public and private funding streams.

The main aim of the strategy proposed by the BID is to increase its members revenues by increasing commercial activity in the local neighbourhood, stimulate a larger evening and night time economy, along with additional outside eating, drinking, and special event areas.

The report proposing this is produced by Arup, a billion-pound multinational consultancy and Placemaking London- public realm planners. It contains nine chapters and an appendix: setting out the context, their vision for the public realm in Fitzrovia East, with priority schemes for Charlotte Street, Chitty Street, Warren Street and Cleveland Street.

As Fitzrovia News points out, this will be a concern for the thousands of people who live in the neighbourhood. The proposals are likely to bring in their wake a wave of late-night disruption to the large residential communities in these areas, a point which the comprehensive report fails to acknowledge. There is at present no formalised process to allow residents to have any say in the drafting of proposals that will affect them made by a BID.

Read the full report [here](#).

The Strand Pedestrianised



Last month Westminster City Council opened a major new public space at Strand Aldwych. This project creates a car-free plaza in front of King's College on the Strand project; it has pedestrianised 7000 sqm of previous highway - the size of a football pitch, with a budgeted cost of circa £22m. This is a significant capital investment.

The church of St Mary-le-Strand, which has spent most of its life in the middle of the road, is now surrounded by planting and seating, while the once narrow pavement outside Somerset House is now a wide pedestrian plaza.

The road traffic that ran along Strand is now diverted around Aldwych which has been converted into two-way traffic, so while the pedestrianised space is the most obvious change, a lot of work had to take place around Aldwych as well to prepare for the traffic diversion.

The Strand/Aldwych scheme was designed in partnership with high-profile local organisations including King's College London, London School of Economics, Somerset House, The Courtauld Institute, High Commissions, theatres, restaurateurs and hoteliers.

Everyone at WCC seems pretty pleased with the outcome, Cllr Geoff Barraclough, Westminster City Council's Cabinet Member for Planning and Economic Development said: "Anyone familiar with that part of Westminster will know just how awful it was for pedestrians, who would take their life in their hands every time they tried to get from one side of Aldwych, across to Strand."

However, it was not that long ago that Labour councillors were demanding to know why Westminster Council went ahead with the scheme in the first place despite receiving very little by way of financial contribution from any of the private sector organisations that stand to benefit.

Councillor Geoff Barraclough, at the time shadow cabinet member for planning had said: "King's College is the main beneficiary of the scheme, yet this fabulously wealthy institution won't be paying a penny. Following the Marble Arch Mound, this is another example of Westminster splurging taxpayer money on fancy designs for central London with no business plan to back up their plans."

The National Gallery



Proposals are being sought for internal and external alterations to part of the National Gallery, namely the Sainsbury Wing, excavating underneath Jubilee Walk and public realm works.

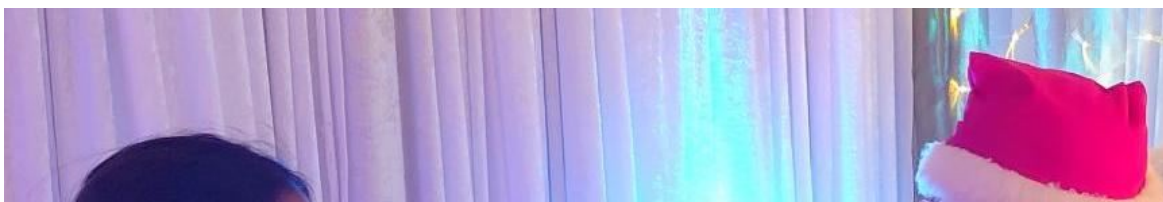
The National Gallery will be celebrating its bicentenary year in 2024/25 and these proposals were part of the gallery's ambitions to relaunch itself as “a gallery for the nation and the world” by improving the visitor welcome at the Sainsbury Wing, enhancing the public realm and improving its education and research centres.

At the WCC planning committee hearing the application received mixed reviews, with the Northbank BID and Cllr Louise Hyams supporting the proposals whilst the Victorian Society and the Twentieth Century Society objected to the proposals stating it would produce “substantial and unjustifiable harm” to the Grade 1 listed Sainsbury Wing.

During the debate, members recognised that the proposals would represent a degree of harm to heritage assets but ultimately believed the benefits outweighed this. Councillors noted it would substantially help the accessibility, visitor experience and future success of the National Gallery, something the committee placed greater importance on than the heritage implications.

The application was approved unanimously.

Families News & Events





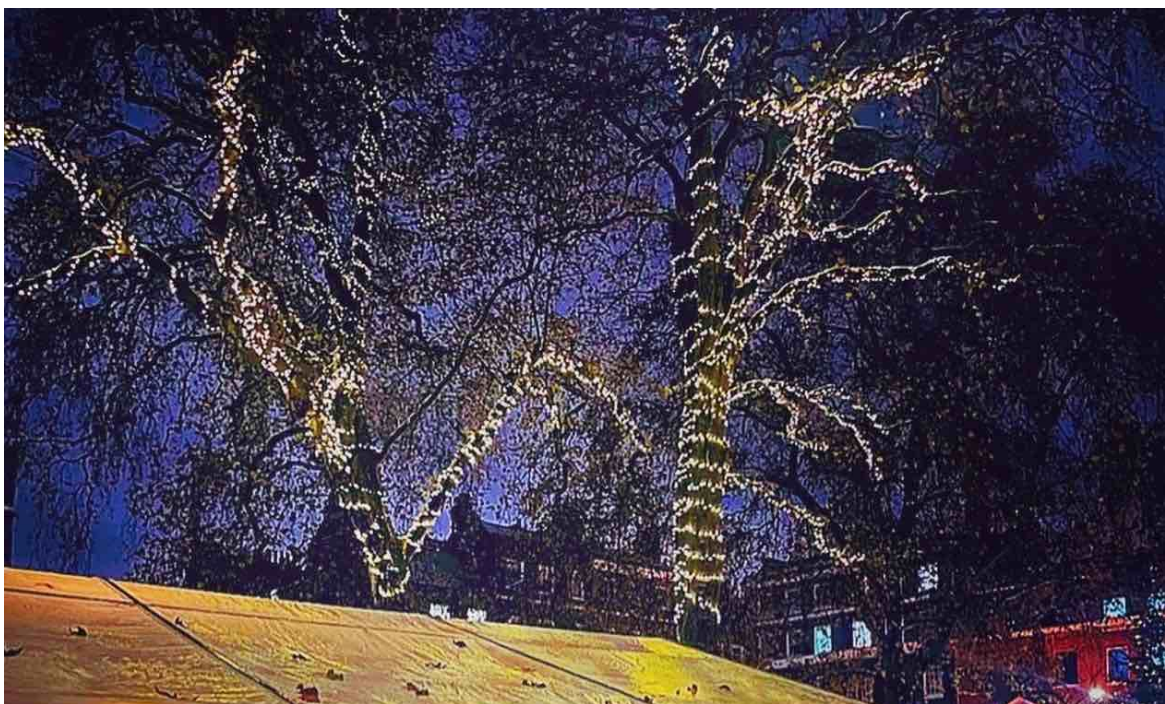
Festive Markets Lookback

Marylebone's Christmas markets are always a very appealing and enjoyable experience for local families during the festive season. The sense of belonging to a village and community is especially heightened during these local events where we bump into our neighbours and catch up with parents and children we recognise from local schools, or who we remember from our years back at local nursery and toddler groups.

Festivities kicked off with Merry Marylebone in November; the temporary use of a pedestrianised high street whilst shopping the stalls, playing the tombola, and eating delicious treats – against a backdrop of local children carol singing, and a crescendo of fireworks! Only problematic issue for families is the hour (and sometimes hour and a half) spent queueing for Santa.

To Howard de Walden organisers- could Santa's magical presence be perhaps doubled in future, to halve the queuing time of families?

To namecheck a few more favourite festive markets held in Marylebone, local families enjoyed the sophisticated Swedish Christmas Market on Harcourt Street, 17th-19th Nov; the marvellous Monocle's Christmas market, 10th-11th Dec. and the charming Church Street Christmas lights switch on, 11th Dec.





Other Events

Marylebone families were joyfully entertained at Paddington Gardens Carols & Christmas Tree, 7th Dec; St Mary's Church Family Carols & Candlelit Carols, 11th Dec; and a special mention for the Manchester Square Garden festivities, with brass band, who kept calm and carried on despite the snow, 12th Dec.

Let us know if we missed any mention of similar events from your corner of Marylebone. Going forward we wish to compile a fuller list for festive families dates ahead of time – and publish in the October 2023 Newsletter.

Please send your news on any upcoming families events in 2023 and share your feedback on how to improve your experience of family life in Marylebone to: niamh.okeeffe@marylebone.org

The Marylebone Diary





December is always an exciting time in the Marylebone social calendar.

The Christmas Carol event with the Regent Community Brass band in Manchester Square Gardens was a great success. Despite the bitter icy cold the Marylebone community turned out in force for mulled wine, Tombola and mince pies and raised a significant amount of money for UK dementia charities. A lovely event and a fantastic cause.

Anyone walking past the Church of the Annunciation near Seymour Street on 12 December, would have heard the (mostly!) sweet voices of 600 boys from Wetherby lower and upper Preparatory School singing their hearts out for their Carol Service.

"Munch in Marylebone" provided sandwiches for many a Christmas meeting and lunch. This catering business has been started by the Marylebone Project (a Registered Social Landlord that provides 112 long- and short-term beds to homeless women in the area). Munch in Marylebone food is freshly prepared by a professional chef and a team of women from the Project and Autumn/Winter menu was a delight! Contact mim@madeinmarylebone.co.uk for orders and deliveries.

The Marylebone Association's afternoon tea at the Wallace Collection was another festive treat. The event was attended by Cllr Barbara Arzymanow and Sheila and John Green (who were the original organisers of the event several years ago). It was also great to see a big turnout from Streathers Solicitors LLP who are one of the Association's key corporate supporters. A big shout out to Lorraine Watson the GM of The Wallace Restaurant for the effortless and friendly service provided.

Finally, the best Marylebone Christmas tree prize has to go to the Chiltern firehouse! A massive tree took over the firehouse and brought with it huge festive cheer.

Announcements

Christmas Tree Recycling

Westminster has over 25 recycling points for real Christmas trees. You can take your tree to a drop-off point from the start of 28 December 2022 to the end of day on 8 January 2023.

Opening hours are 8am to 8pm unless they are in parks, which close at 4.30pm

Those in or near the Marylebone area are listed below:

- Penfold Street on the junction with Broadley Street next to the existing recycling bins
- Lisson Grove on the junction with Rossmore Rd next to the existing

- recycling bins
- Bryanston Square on pavement, northeast corner of square
- Hyde Park Crescent junction with Southwick Place on island in front of St John's Church
- Montagu Square on pavement, southeast corner of square
- Paddington Street Gardens, north side Paddington Street Gardens
- Cavendish Square Gardens, southwest entrance

Get Involved with Report It

Westminster council's Report It service, the easy way to report dumped rubbish, noise nuisance and much else is to be revamped

WCC wants to hear from residents on how efficient the Report It page is.

Have you used it? Did you find it user-friendly, or do you have some suggestions on how to improve it? [Have your say.](#)

Pandemic & Plague Prediction

A Secret History of Pandemic and Plague Prediction: 2019-2021: Virus Years, by R.E. Slater.

The following five people in history have known how pandemics and outbreaks of the plague can be predicated: -1. Hippocrates 'the father of medicine', after whom the present medical profession's 'Hippocratic Oath' was named. 2. Aristotle, the Greek scientist and philosopher, one of the most influential figures in Western thought. 3. Philip VI, King of France in the fourteenth century when the 'Black Death' threatened destruction. 4. William Lilly, the seventeenth century parishioner who predicted the Great Plague of London. 5. Rudolf Steiner, who edited Goethe's scientific works, and lived through the 'Spanish Flu' pandemic at the end of World War One.

Galen, not mentioned in the book, was the Second Century Greek physician, and adviser to three emperors, who wrote commentaries on Hippocrates and for many centuries was the standard authority on medical matters.

All gave or received the same answer.

Read 'A Secret History of Pandemic and Plague Prediction: 2019-2021: Virus Years' by R.E. Slater to find out what the answer is, for the same explanation could have predicted the current global pandemic, and may provide a guide to its longevity.

Paperback: Reference: <https://www.amazon.com/dp/B08VCYDF9W>

A Chance2Change

Going to prison can cause the loss of a home, possessions, job and connections

Going to prison can cause the loss of a home, possessions, job and connections with family and friends.

At WLM Katherine Price Hughes (KPH), we give men who've been through the criminal justice system the space to journey from custody to community. Our expert team works with them to offer them the opportunity to talk and to support them with what matters to them. By accessing housing, health and employment support, training and education, we help them focus on their future and not the past, preventing them from homelessness and reducing the likelihood of them re-offending. Over the last year, our community, counselling and criminal justice services have seen many challenges as people in the communities we work in face multiple hurdles to getting the chances they need to achieve their potential.

This Christmas, with your help, we can keep offering people the fair chances they need. To have a #chance2change. We recognise that the cost of living crisis means most of us are facing challenging times. Thank you so much for anything you're able to give, even the smallest contribution can have a massive impact on someone's life. We wish you and your loved ones a very happy and healthy Christmas. If you're able to give something to help people create their chance to change this Christmas, you can donate [here](#).

New Business Members



Iberica Marylebone, 195 Great Portland Street, W1W 5PS

Located in Great Portland Street, Ibérica Marylebone offers one of the most authentic Spanish dining experiences in London. Under the guidance of Michelin-starred Chef Director Nacho Manzano, Ibérica's menu features a selection of classic and contemporary tapas, artisan delicatessen and Valencian style rices alongside an award-winning drinks list. The restaurant also offers a wide range of the finest Spanish wines, cheeses, charcuterie and larder products available to take away or to be delivered at home by ordering on the Ibérica online shop.

As a new member of the Marylebone Association (MA), Ibérica restaurants are offering 25% off food to all members until the end of February. Simply book a table for up to 4 guests quoting "Marylebone Association" and show this newsletter at the restaurant to redeem your offer. For more info and bookings please visit their website.

<https://www.ibericarestaurants.com/locations/marylebone/>

myleasehold

myleasehold

myleasehold are an award winning firm of Chartered Surveyors, specialising in lease extensions and enfranchisement. Established in 2004, and based in Marylebone, the company continues to provide their valuation and negotiation expertise to landlords and tenants.

myleasehold Ltd, 14 David Mews, London, W1U 6EQ www.myleasehold.co.uk

Association Events

JANUARY DRINKS PARTY

Thursday 26th January 2023 at 7pm

The Oriental Club, Stratford House, 11 Stratford Place, London, W1C 1ES.

We are delighted to be having once again our annual wine and canapés party in the elegant atmosphere of the Library at The Oriental Club. This Grade 1 listed private members club is one of the most impressive surviving examples of Georgian architecture in this part of London. All residential and business members are welcome with the opportunity to meet old friends and new, along with members of the Committee. We can all look forward to a very enjoyable evening.

To reserve your place please email Lois German on lois.german@marylebone.org or telephone 0207 487 2706. The cost this year is £35.00 per head and payment details will be provided on booking. Only a few places remain and we will be operating a waiting list.

REGULAR ASSOCIATION EVENTS

BOOK CLUB

Wednesday 4 January 2023 at 6.30 pm

The King's Head, Westmoreland Street, W1G 8PJ

'Love in a Cold Climate' by Nancy Mitford

We meet on the first Wednesday of the month upstairs at The King's Head pub in Westmoreland Street and all book choices are available in paperback and on e-readers. We are always delighted to welcome new members so, if you would like to join us, please contact Liz Queenan (liz.queenan@marylebone.org) or tel: 020 7486 3709.

PUB EVENING

Monday 9th January at 6.30 pm

The Prince Regent, 71 Marylebone High Street, W1U 5JN

Continuing with our regular bi-monthly pub evening at this popular London pub, with plush bar, menu and real ales. Everybody is welcome so do come along whether you are a regular or new to our pub evenings, where you will be greeted by our hostess for the evening Anne Hamilton.

SCRABBLE CLUB

Tuesday 10 and 24 January 2022

The Duke of Wellington, 54a Crawford Street, London W1U 2UG

The Duke of Wellington, 54a Crawford Street, London W1H 2HQ

The Scrabble Club normally meets in the private dining-room at The Duke of Wellington pub in Crawford Street on the 2nd and 4th Tuesday of each month, from 5 until 7, with Scrabble sets and dictionaries provided – and all levels of players very welcome. Anyone interested in joining and/or wanting further information should contact rosemary.forgan@marylebone.org or 0788 789 1977.

Mailing Address: Marylebone Association, 6 Wimpole Street, London, W1G 8AL

If you have news get in touch by emailing news@marylebone.org

[Unsubscribe](#)